



18/1 Ramu Close Sylvania Waters NSW

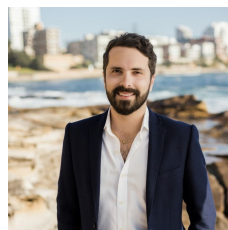
3 2 2

Tucked away at the rear of a resort inspired complex, this full brick townhouse presents an excellent readymade investment opportunity, equally appealing to young families. It is conveniently located, only footsteps from local shops and cafes.

- Open plan living and dining area enjoys seamless outdoor flow, split system A/C
- Great sized, low maintenance outdoor terrace with undercover area
- Renovated well-equipped kitchen with ample cupboard space & dishwasher
- Three upper level bedrooms, all with built-ins & ceiling fans
- Master bedroom features ensuite, split system A/C and opens to the sunlit terrace
- Neat and tidy main bathroom includes separate bath and

Price : \$ 900,000

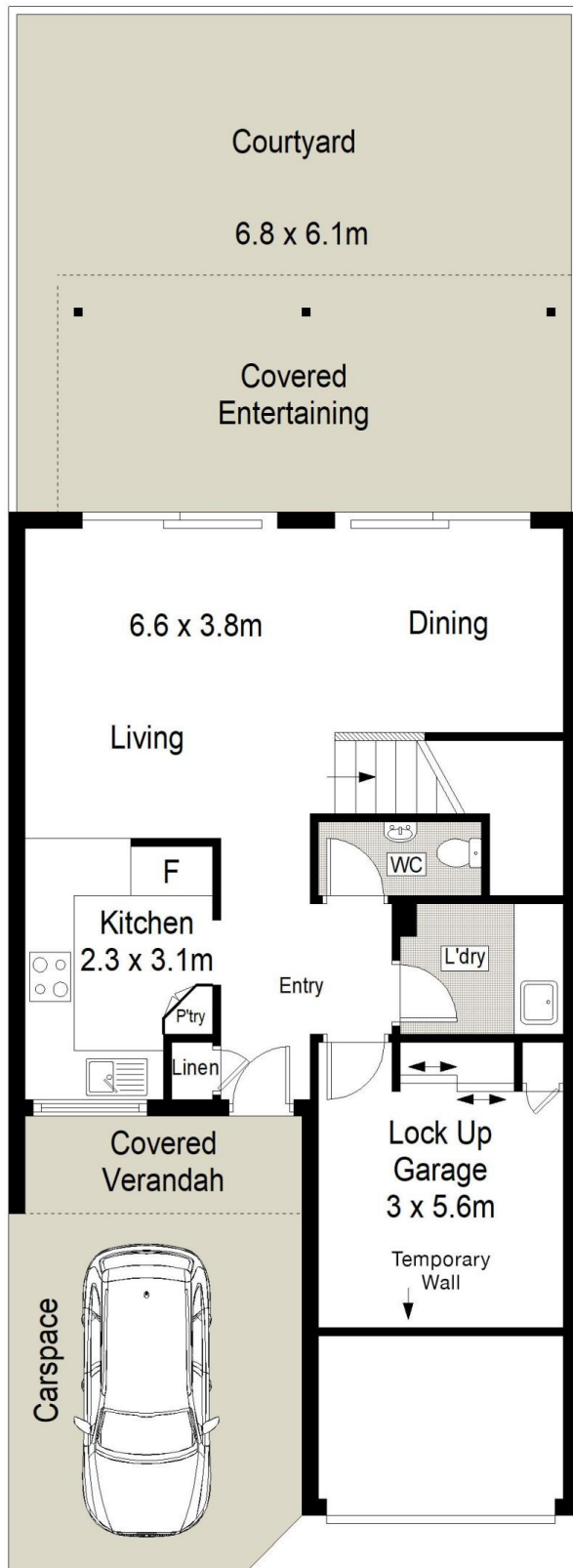
View : <https://www.cronullarealestate.com.au/sale/nsw/sutherland/sylvania-waters/residential/townhouse/7912341>



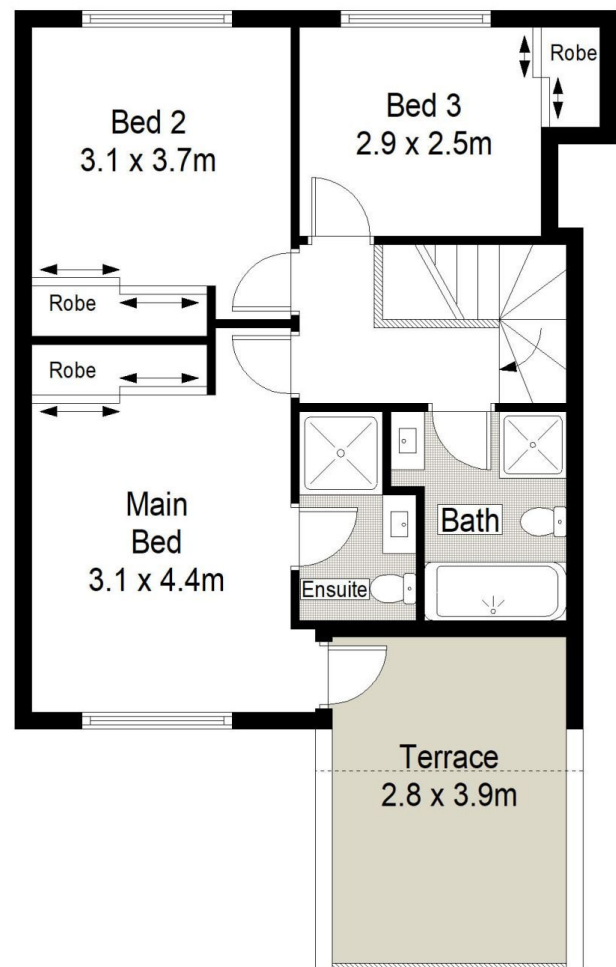
Corey Bell
02 9523 9422



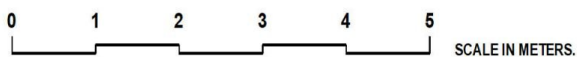
Jake Whittaker
02 9523 9422



GROUND FLOOR



FIRST FLOOR



Scale in metres. Indicative only. Dimensions are approximate. All information contained herein is gathered from sources we believe to be reliable. However we cannot guarantee its accuracy and interested persons should rely on their own enquiries.

