






16b San Remo Avenue Gymea NSW

5  3  1 

Experience the allure of stunning curved architecture, premium on trend finishes and meticulous craftsmanship. Renowned interior designer Rochelle Halatau has worked closely with Emmanuel Building Group ensuring every corner of this luxury full brick residence exudes style, space and functionality.

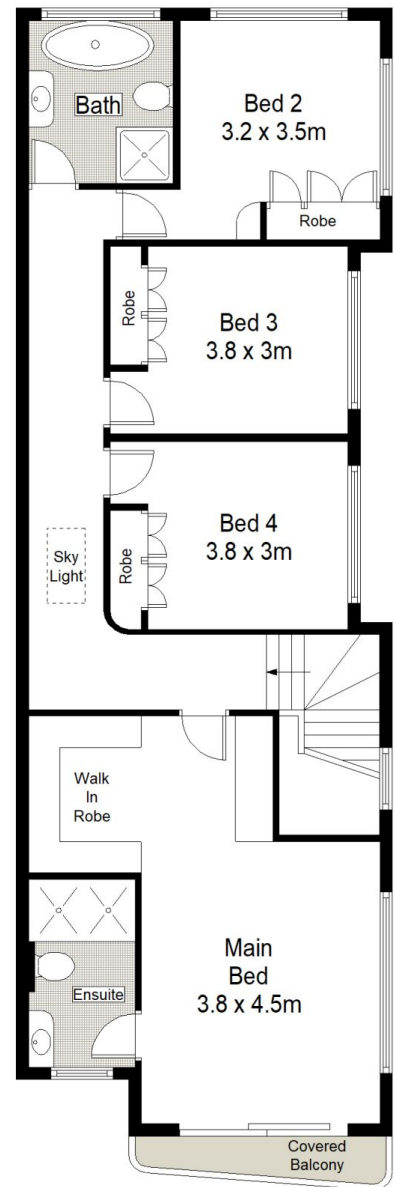
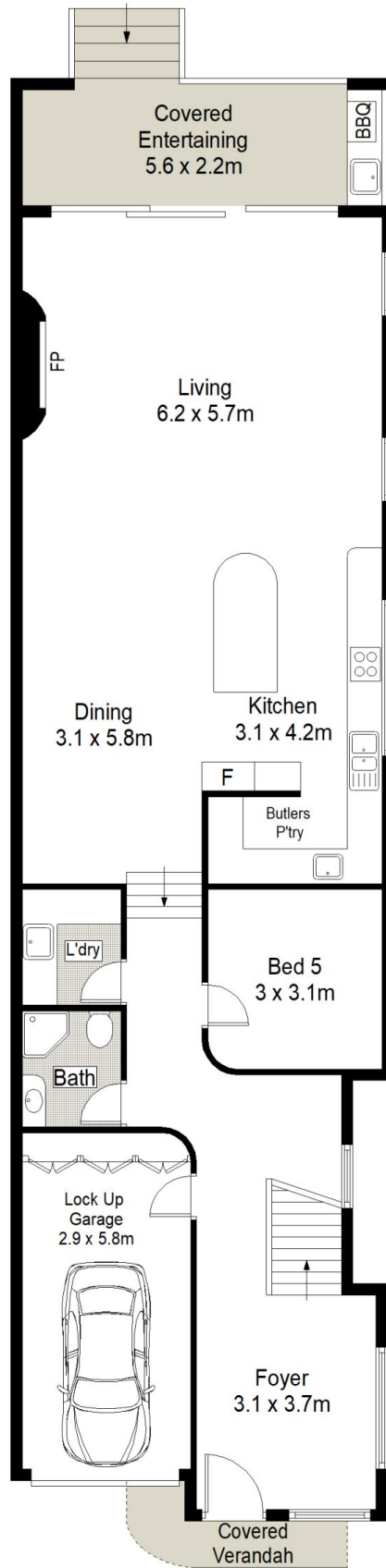
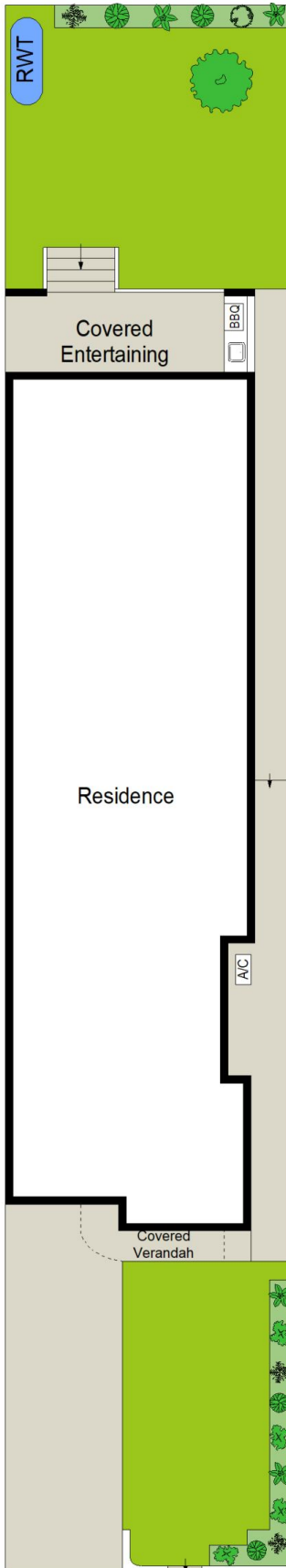
View : <https://www.cronullarealestate.com.au/sale/nsw/sutherland/gymea/residential/semi-detached/7835649>

Located in a peaceful, family-friendly neighbourhood in a quiet popular street, the property is situated just moments from Gymea shopping village, local schools, and transportation hubs, offering unparalleled convenience for modern living and sophistication.



Briolynn Kennedy
02 9523 9422

- Full brick residence, constructed with meticulous attention to detail
- Exceptional high-end finishes featuring light coastal colour tones



0 1 2 3 4 5
SCALE IN METERS.



Scale in metres. Indicative only. Dimensions are approximate. All information contained herein is gathered from sources we believe to be reliable. However we cannot guarantee its accuracy and interested persons should rely on their own enquiries.

