

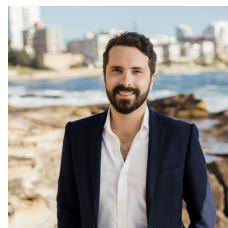
### 12/10-14 Warburton Street Gymea NSW

2 1 2

Positioned in an ultra-convenient location, this ground floor two-bedroom apartment features a generous and flowing floor plan leading to an entertainer's patio. Oversized in proportions and offering a lifestyle of convenience and comfort in a leafy garden setting, this apartment is perfect for those looking to invest, downsize or purchase their first home.

- Private & convenient ground floor position within a well maintained building
- Generously proportioned throughout with separate lounge & dining areas
- Functional open plan oversized kitchen breakfast bar
- Two double sized bedrooms, both with built-in robes
- Large entertainers patio overlooking common gardens
- Contemporary bathroom complete with separate bath, shower & WC

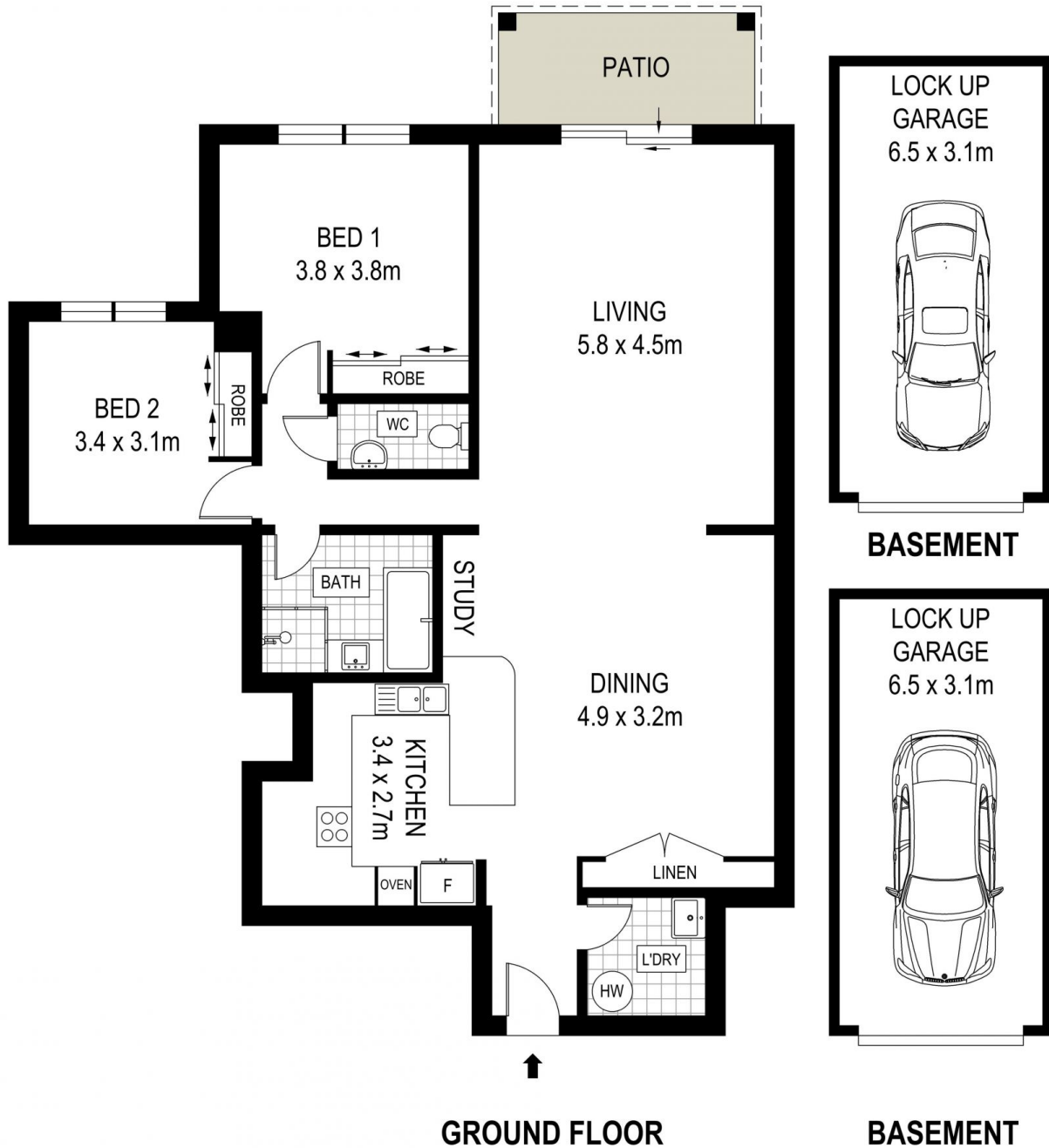
**Price** : \$ 785,000  
**Building Size** : 146 sqm  
**View** : <https://www.cronullarealestate.com.au/sale/nsw/sutherland/gymea/residential/apartment/7800541>



**Corey Bell**  
02 9523 9422



**Jake Whittaker**  
02 9523 9422



DISCLAIMER: THIS IS FOR ILLUSTRATIVE PURPOSES ONLY, ALL DIMENSIONS ARE APPROXIMATE AND IT DOES NOT CONSTITUTE PART OF ANY LEGAL DOCUMENTS.

12 / 10 Warburton Street, Gympie