



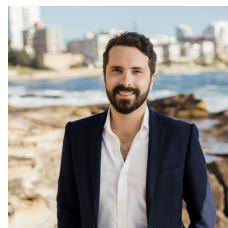
13/86 Yathong Road Caringbah NSW

3 2 1

Nestled serenely at the rear of the complex, this remarkable townhouse epitomises the essence of tranquillity and offers generous proportions, spanning over an impressive 217sqm (approx.) entitlement. Boasting a luminous and open interior that has been meticulously renovated to perfection, this residence is a haven of impeccable design. Its inviting terraced courtyard, ideal for entertaining, complete with deck, built in seating and fire pit, creating a seamless blend of indoor and outdoor living. Welcome to a haven of peace and privacy in the heart of a vibrant neighbourhood.

- Open plan living & dining with timber flooring and plantation shutters
- Sprawling terraced courtyard with deck, built in seating & fire pit
- Direct access to public reserve via gate in the courtyard

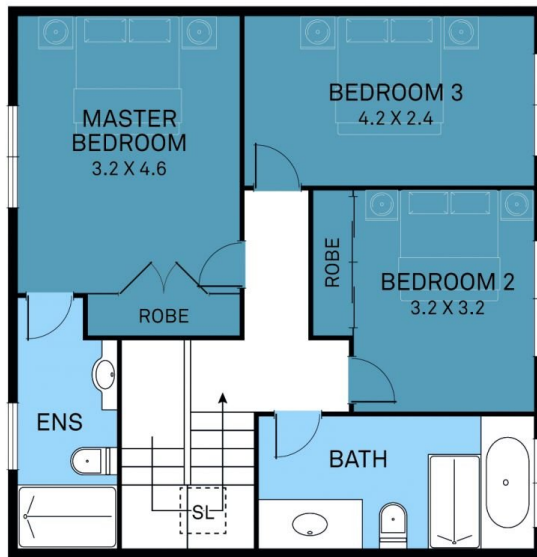
Price : \$ 1,340,000
Land Size : 217 sqm
View : <https://www.cronullarealestate.com.au/sale/nsw/sutherland/caringbah/residential/townhouse/7760822>



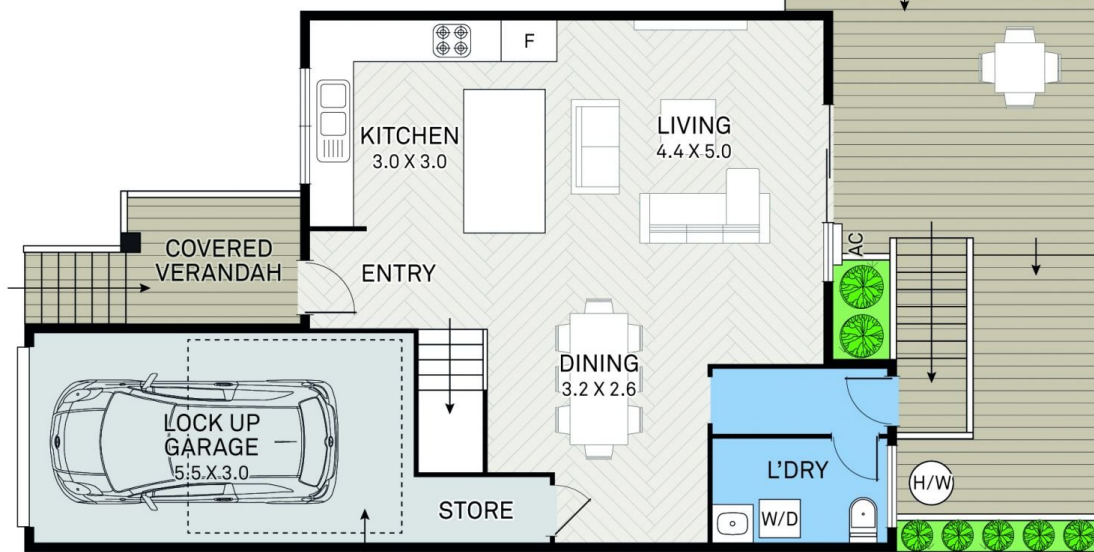
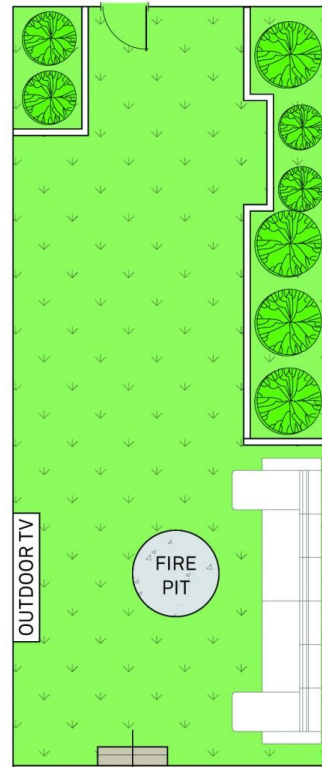
Corey Bell
02 9523 9422



Jake Whittaker
02 9523 9422



FIRST FLOOR



GROUND FLOOR

MEZZANINE
STORAGE

13/86 Yathong Road, Caringbah

