



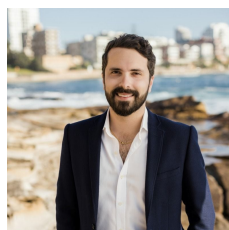
126 Woronora Crescent Como NSW

5 3 2

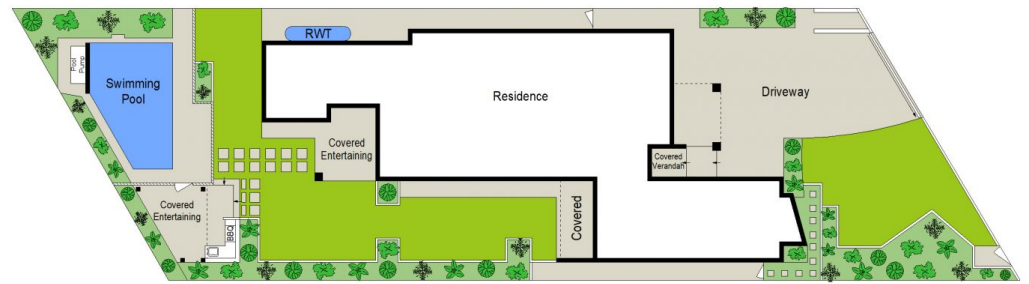
Situated in a tranquil neighbourhood and conveniently located within close proximity to local schools, shops and public transport. Architecturally designed by Couvaras Architects, this contemporary dual level family home is simply perfect for the growing family. Featuring multiple indoor and outdoor living and dining areas, skillfully designed to capitalise on direct sun and natural light all year round. Enjoy the privacy of low maintenance outdoor entertaining by the pool, terrace and BBQ area.

- Multiple living and dining areas throughout the home, drenched in natural light
- Large entertainer's kitchen with corian bench tops & quality appliances
- Kitchen/dining flows seamlessly to outdoor area ideal for family living
- Four spacious bedrooms upstairs along with separate

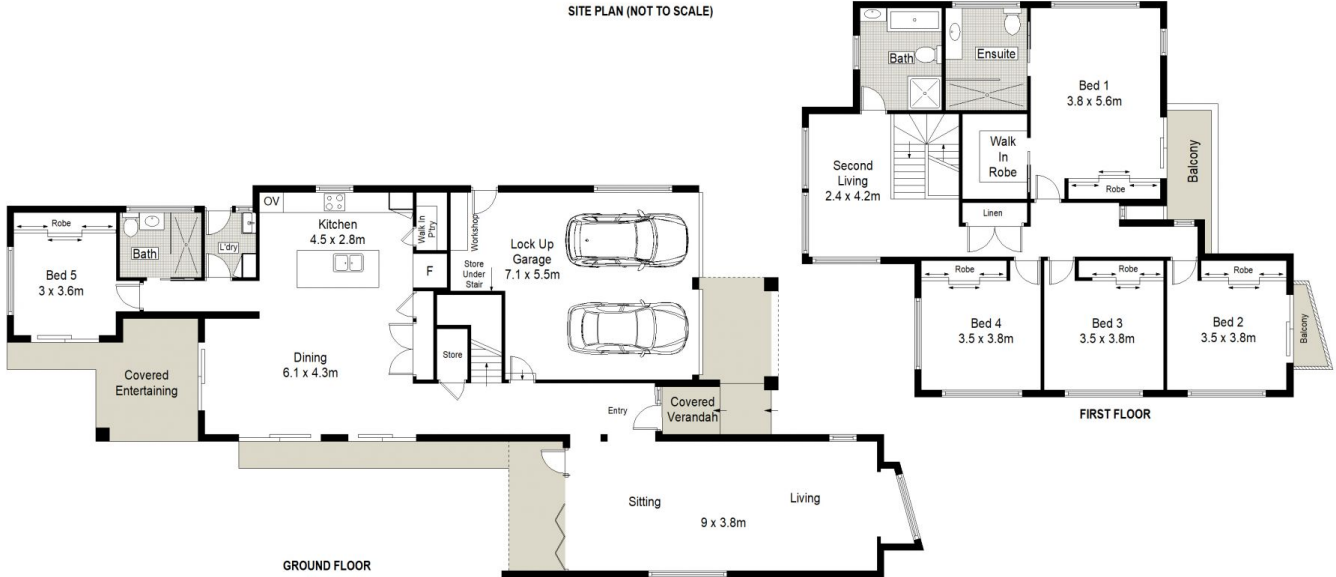
Price : \$ 2,300,000
Land Size : 556.4 sqm
View : <https://www.cronullarealestate.com.au/sale/nsw/sutherland/como/residential/house/7600330>



Corey Bell
02 9523 9422



SITE PLAN (NOT TO SCALE)



126 Woronora Crescent, Como

Scale in metres. Indicative only. Dimensions are approximate. All information contained herein is gathered from sources we believe to be reliable. However we cannot guarantee its accuracy and interested persons should rely on their own enquiries.

