



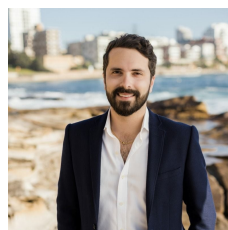
13/73 Denman Avenue Woollooware NSW

3 2 2

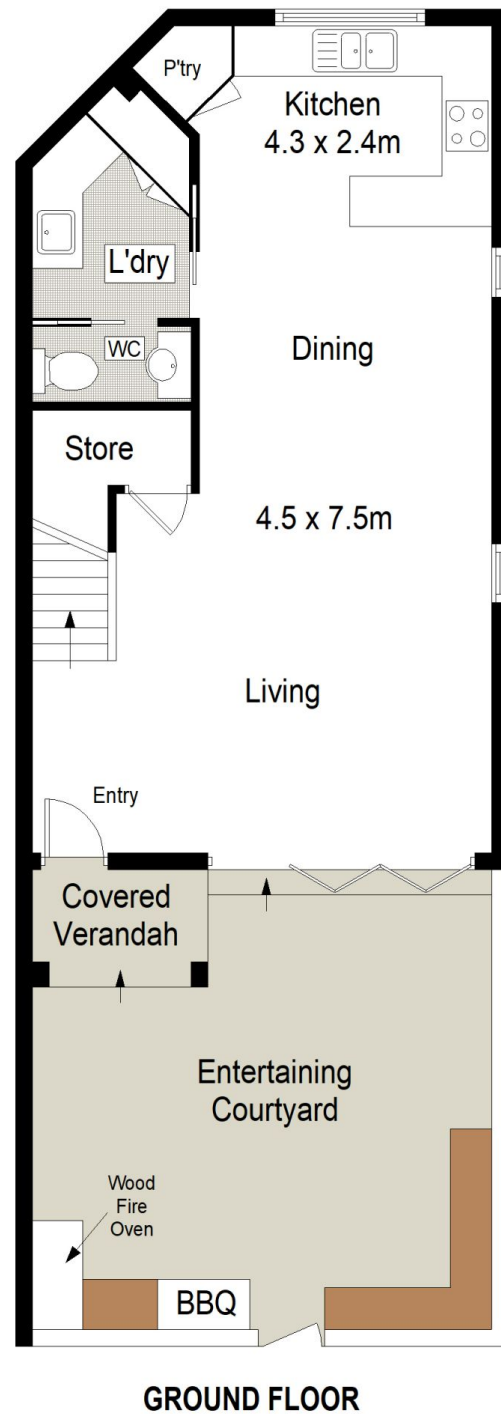
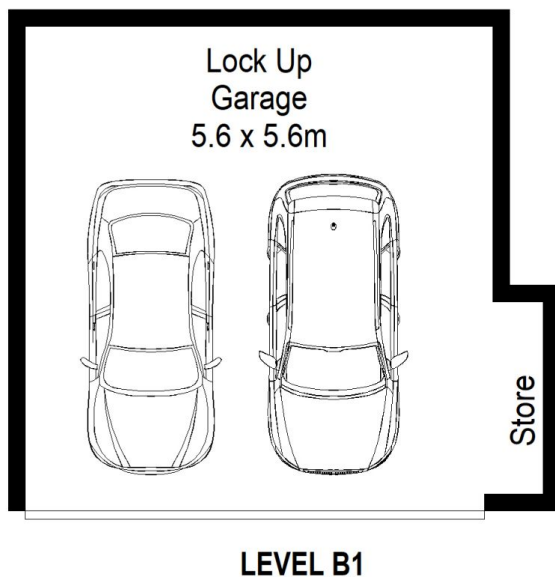
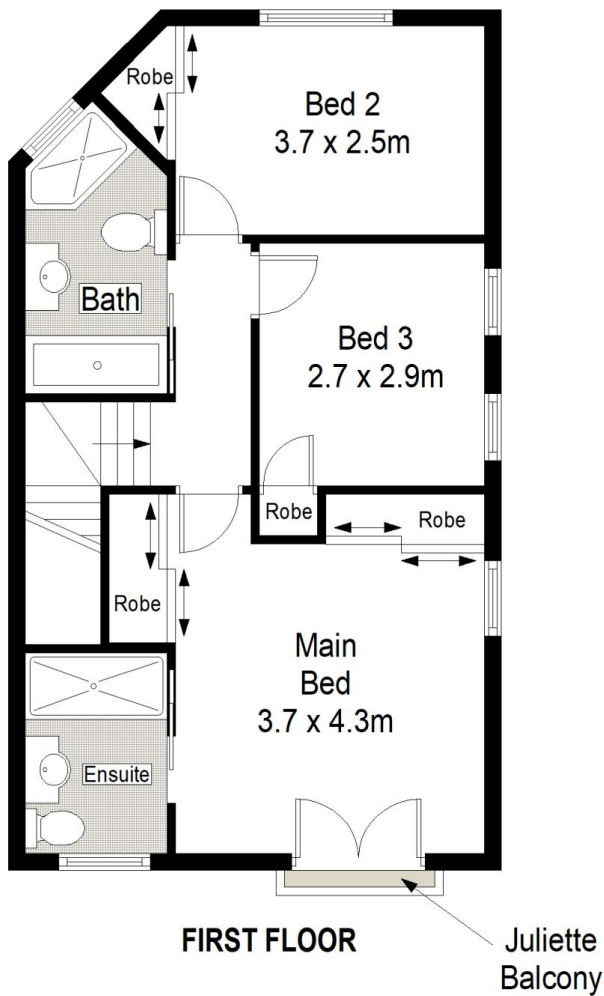
Offering a luxuriously appointed floor plan and fabulous north facing entertainer's courtyard. This elegantly presented townhouse is perfect for those seeking an easy convenient, low maintenance lifestyle. Located close to reputable schools and just a short stroll to Wills Road local shops, Woollooware Train Station, walking distance to Shark Park, Cronulla CBD and beaches and the soon to be completed Woollooware Bay development plus rear access to Woollooware public golf course.

- Quietly positioned towards the rear of the well maintained complex
- Spacious kitchen with stone benches, ample storage & stainless steel appliances
- Open living/dining with timber floors, flows effortlessly to courtyard through bi-fold doors
- Private North facing courtyard with built-in BBQ, pizza

Price : \$ 1,400,000
Building Size : 170 sqm
View : <https://www.cronullarealestate.com.au/sale/nsw/sutherland/woollooware/residential/townhouse/7491814>



Corey Bell
02 9523 9422



0 1 2 3 4 5
SCALE IN METERS.



Scale in metres. Indicative only. Dimensions are approximate. All information contained herein is gathered from sources we believe to be reliable. However we cannot guarantee its accuracy and interested persons should rely on their own enquiries.

