

20 Captain Cook Drive Kurnell NSW

3  1  3 

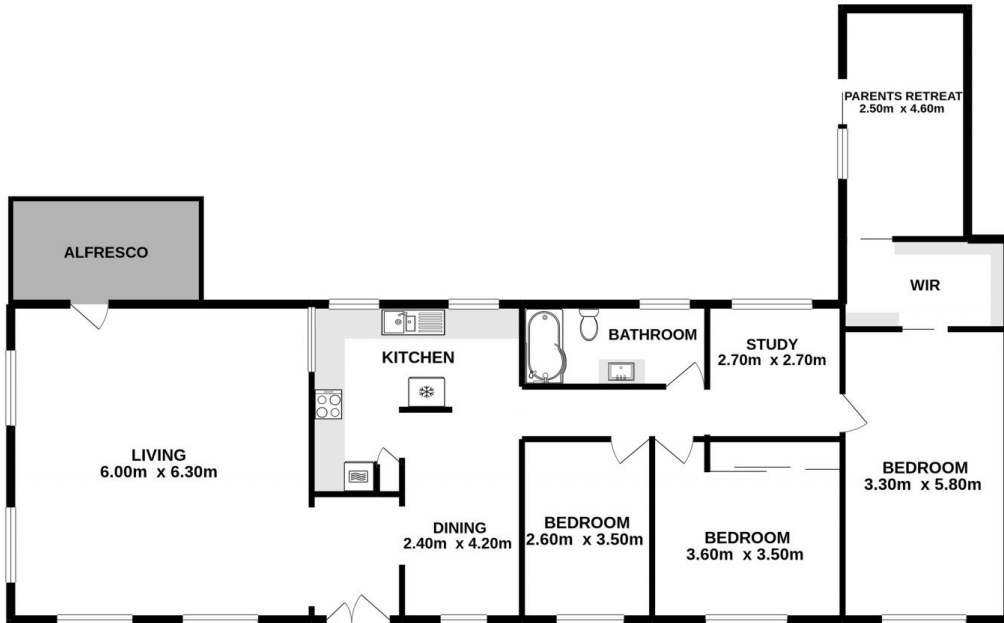
Located in one of Kurnell's most desirable locations this charming single level brick home is drenched in natural light with the convenience of two street access. The park-like gardens and lawns naturally surround the home offering a feeling of space and tranquillity.

- Single level brick veneer family home close to the beach, shops and National Park
- Sunny yard surrounding the home with established gardens & in ground pool
- Enormous family room with luxuriously large glass windows overlooking pool
- Neat timber kitchen with stainless steel appliances & ample cupboard space
- Separate dining room adjacent to kitchen, polished timber floors throughout
- Great sized bedrooms , master with walk-in-robe and

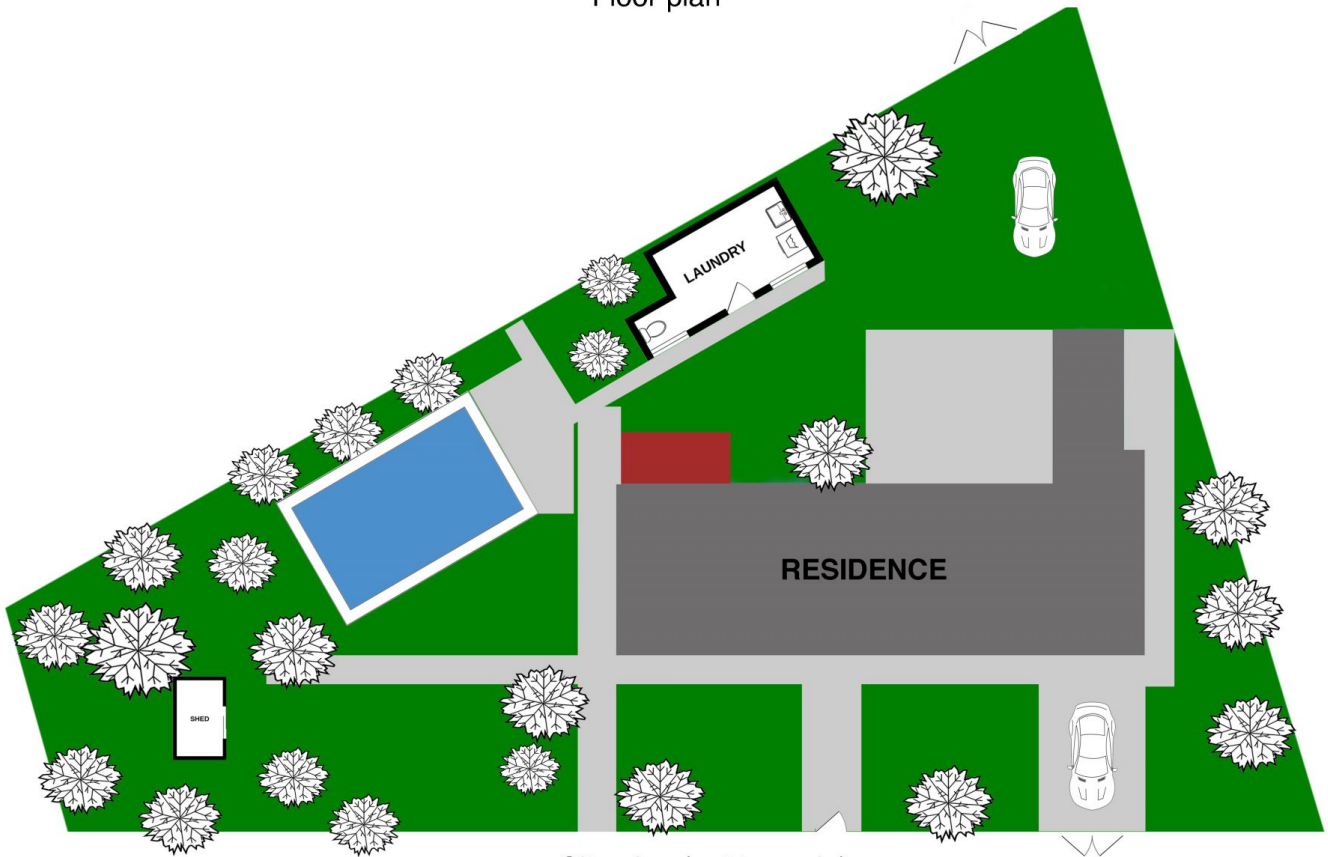
Land Size : 954.8 sqm
View : <https://www.cronullarealestate.com.au/lease/nsw/sutherland/kurnell/residential/house/7352534>



Property Management Team
02 9523 9422



Floor plan



Site plan (not to scale)



20 Captain Cook Drive Kurnell

DISCLAIMER: PLANS SHOWN ARE FOR PRESENTATION PURPOSES AND ARE NOT PART OF ANY LEGAL DOCUMENT. ALL MEASUREMENTS AND FIGURES ARE APPROXIMATE.