



103A Wyralla Road Miranda NSW

4 3 1

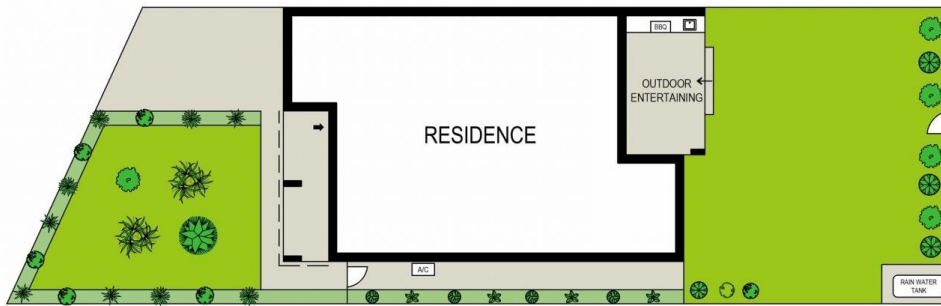
Offering a refreshing, tasteful design and boasting warmth and comfort from the moment you walk through the door, this architecturally designed family home is surrounded by the convenience of local shops, transport, schools, parks and Yowie Bay boat ramp.

- Versatile floor plan featuring a second living, quality timber floors throughout
- Oversized bedrooms with separate balconies, master incl. ensuite & walk-in
- Well-appointed fourth bedroom/study on the ground floor
- Impressive gourmet kitchen with stone bench tops and Smeg appliances
- Ducted air conditioning, CCTV, alarm, video intercom, unique storage spaces
- Sunny, north facing yard with landscaped gardens and covered entertaining

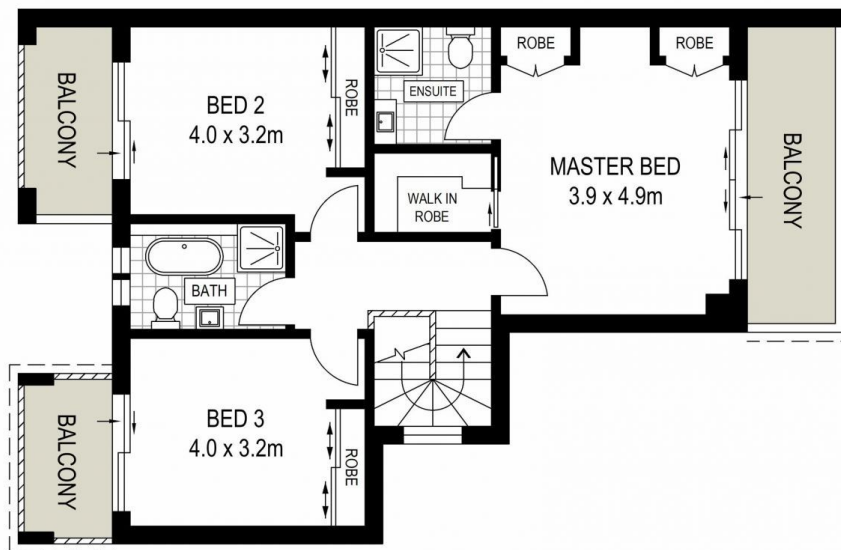
Land Size : 327 sqm
View : <https://www.cronullarealestate.com.au/sale/nsw/sutherland/miranda/residential/semi-detached/7297761>



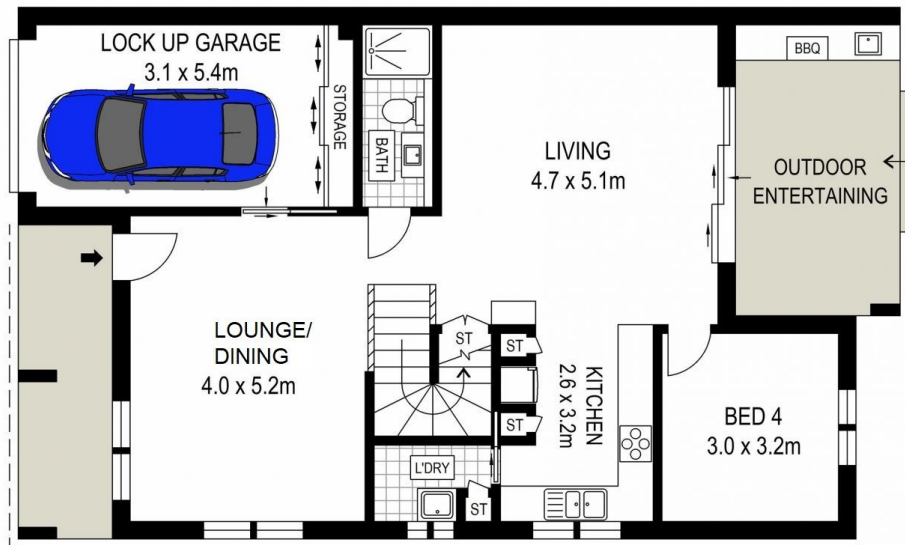
Briolynn Kennedy
02 9523 9422



SITE PLAN (NOT TO SCALE)



FIRST FLOOR



GROUND FLOOR

ADDRESS:
103A Wyralla Road, Miranda



DISCLAIMER: THIS IS FOR ILLUSTRATIVE PURPOSES ONLY, ALL DIMENSIONS ARE APPROXIMATE AND IT DOES NOT CONSTITUTE PART OF ANY LEGAL DOCUMENTS.