



### 21 Novara Crescent Como NSW

3  1  1 

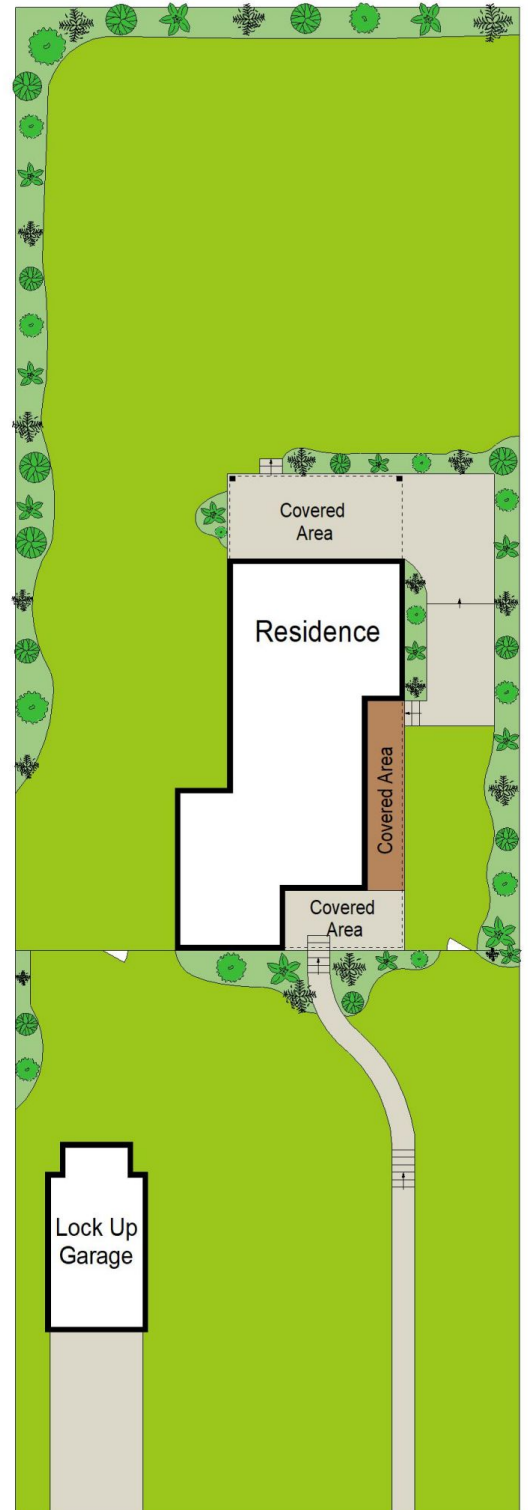
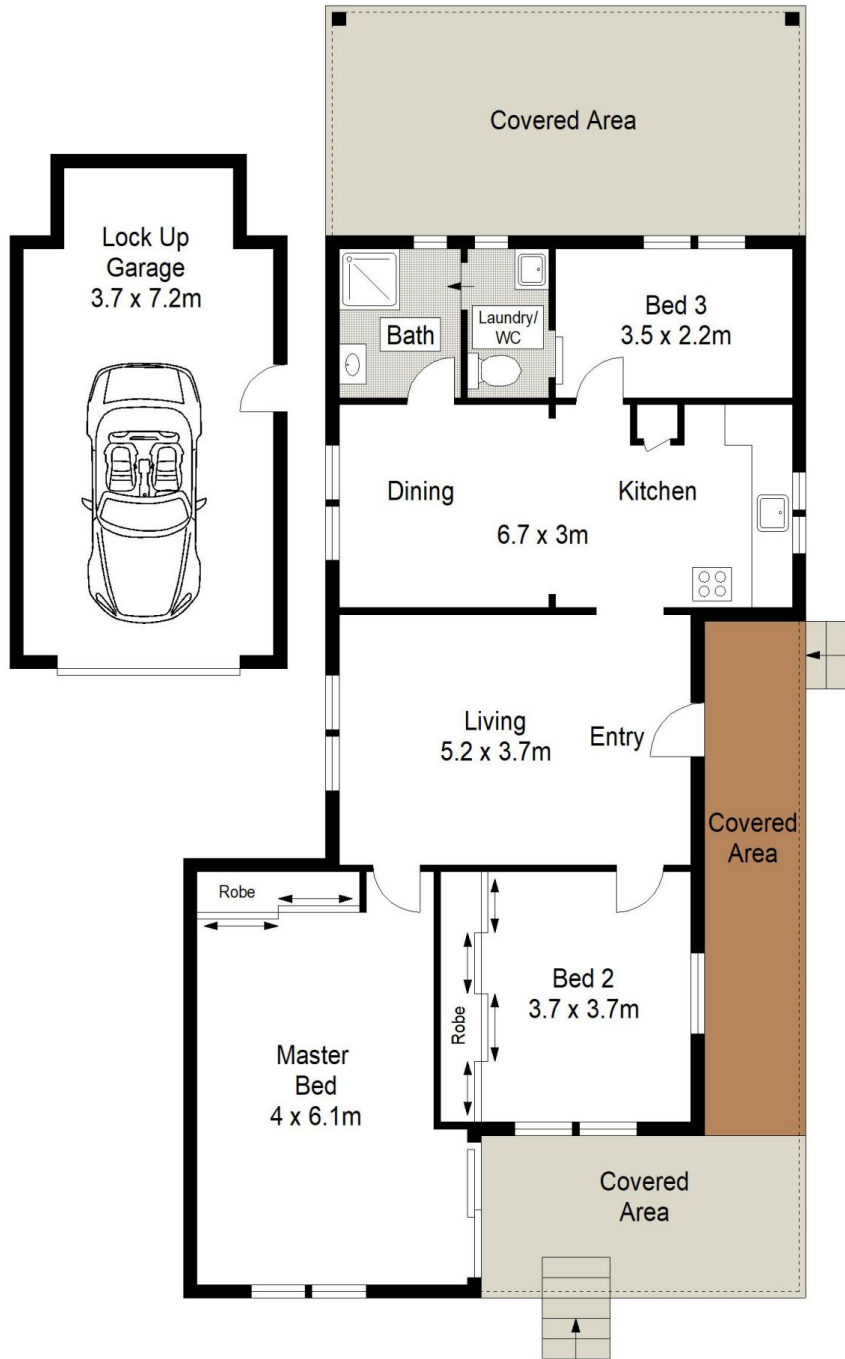
Boasting an impressive 1,214sqm block and offering an immaculate three bedroom residence, this property is located in a very desirable family friendly locale, minutes to Como Pleasure Grounds, Como Hotel and Como Marina.

- Elevated position offering sweeping district views and leafy outlook
- Three spacious light-filled bedrooms, two with built in wardrobes
- Fully functional kitchen with electric cooking and ample storage
- Separate living and dining with reverse cycle air-conditioning
- Single lockup garage plus additional off street parking
- Covered alfresco entertaining and oversized grassed yard
- Close to local schools, parks, transport, Como Marina and Hotel

**Land Size** : 1214 sqm  
**View** : <https://www.cronullarealestate.com.au/lease/nsw/sutherland/como/residential/house/7046045>



**Property Management Team**  
**02 9523 9422**



**SITE PLAN (NOT TO SCALE)**

0 1 2 3 4 5  
SCALE IN METERS.



Scale in metres. Indicative only. Dimensions are approximate. All information contained herein is gathered from sources we believe to be reliable. However we cannot guarantee its accuracy and interested persons should rely on their own enquiries.

