



35 Gore Avenue Kirrawee NSW

4 1 1

Located within a peaceful setting on the edge of the Royal National Park, this two storey home offers great bushland views and comfortable family living.

Positioned in a quiet street with a versatile floorplan the property is located within the Grays Point Primary & Kirrawee High school catchment 100m away from the Savilles Creek National Park walking trail entrance.

Land Size : 600 sqm

View : <https://www.cronullarealestate.com.au/sale/nsw/sutherland/kirrawee/residential/house/6826757>

? Two storey brick veneer family home, loads of natural light.

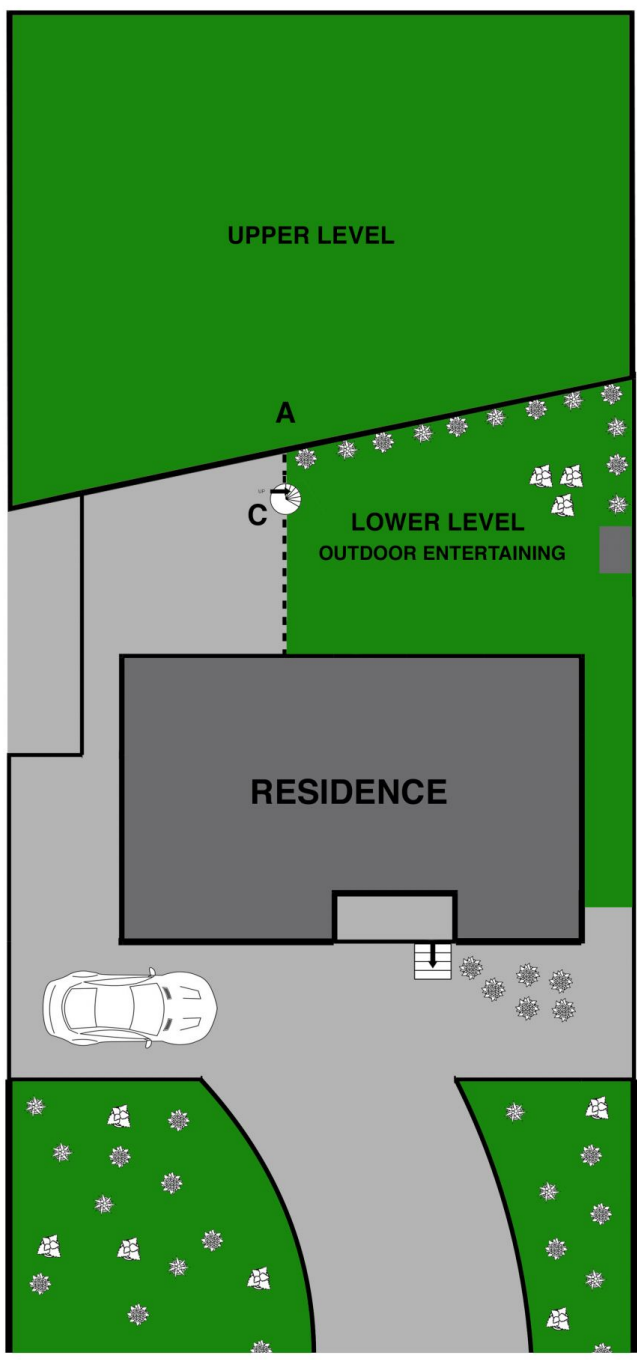
? Quality kitchen with stone bench tops and modern appliances.

? Spacious lounge/dining with full sized windows capturing the leafy outlook.

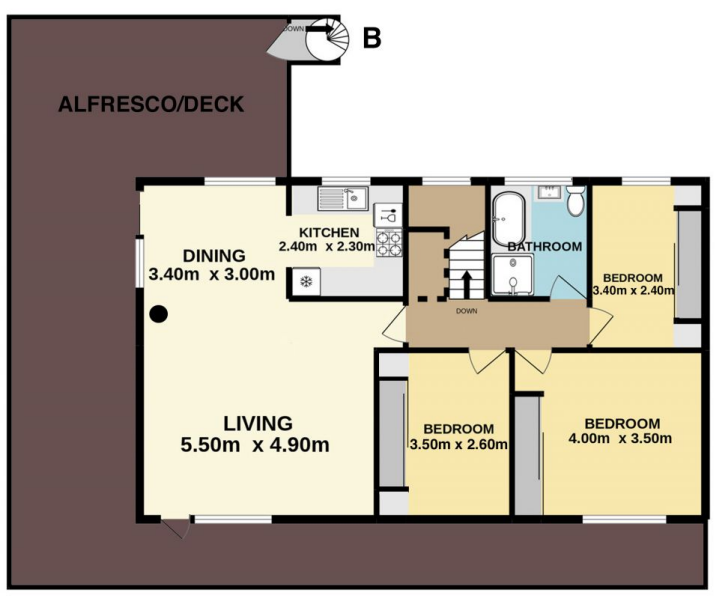
? Huge ground floor multipurpose room opening out to rear yard.



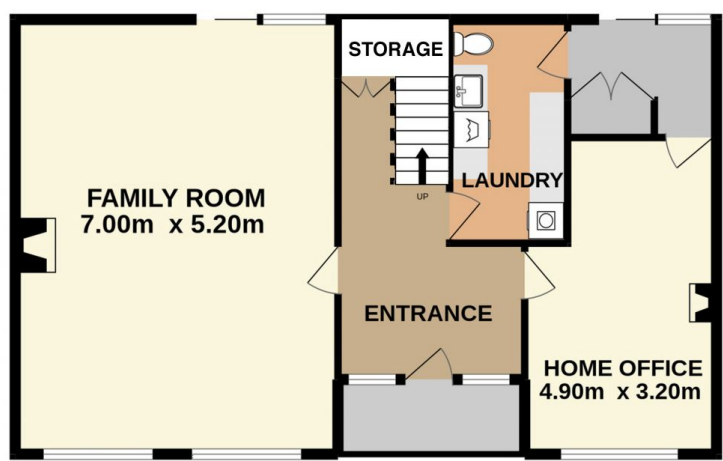
Mark Wigley
02 9523 9422



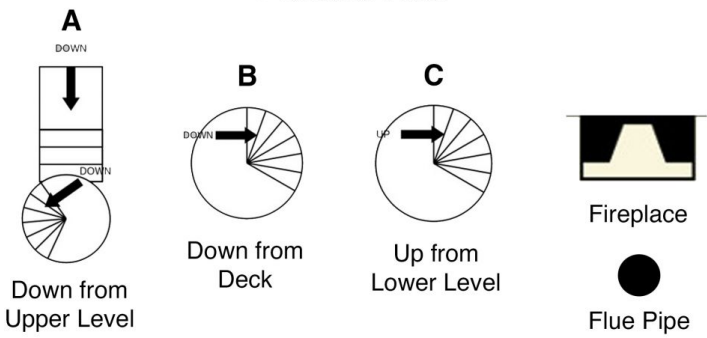
Siteplan (not to scale)



First Floor



Ground Floor



35 Gore Avenue Kirrawee

DISCLAIMER: PLANS SHOWN ARE FOR PRESENTATION PURPOSES AND ARE NOT PART OF ANY LEGAL DOCUMENT. ALL MEASUREMENTS AND FIGURES ARE APPROXIMATE.