



14b Dolans Road Woolooware NSW

3 3 1

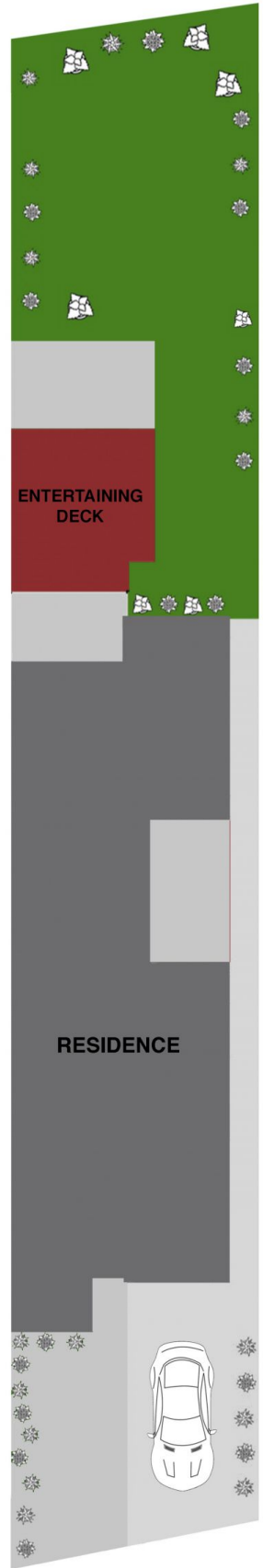
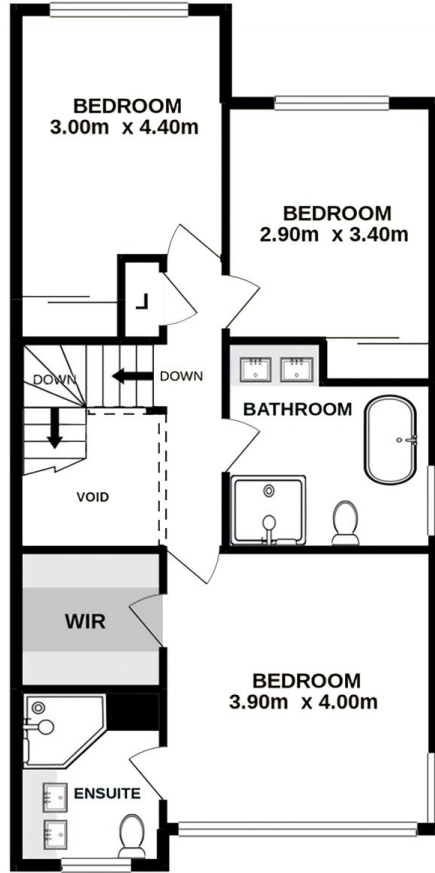
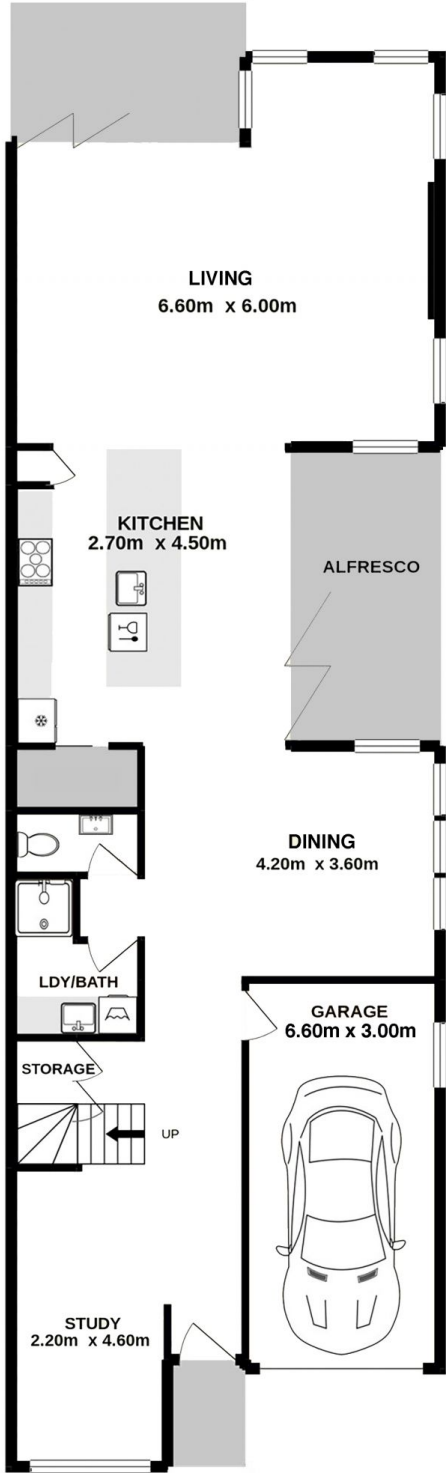
Presenting the perfect sanctuary for young families and downsizers, a stunning designer duplex that exudes style & sophistication. This Torrens Title residence created by Jamisa Architects boasts a collection of highlight windows & glass louvres capturing an abundance of natural light & stunning high ceilings complimented by beautiful gardens and lush green lawns. Only a short walk to Woolooware train station, buses, schools and Cronulla's beaches & shops.

- Elegant kitchen with island bench, gas cooking, dual ovens, integrated Vintec Beer & Wine fridge.
- Multiple open plan living & dining spaces, ability to convert dining to a fourth bedroom or media room
- Gorgeous alfresco courtyard opposite kitchen ideal for entertaining all year
- Three double sized bedrooms with built in robes upstairs.

Price : For Sale
Land Size : 391 sqm
View : <https://www.cronullarealestate.com.au/sale/nsw/sutherland/woolooware/residential/semi-detached/6753452>



Corey Bell
02 9523 9422



14B Dolans Road Woollooware

DISCLAIMER: PLANS SHOWN ARE FOR PRESENTATION PURPOSES AND ARE NOT PART OF ANY LEGAL DOCUMENT. ALL MEASUREMENTS AND FIGURES ARE APPROXIMATE.