



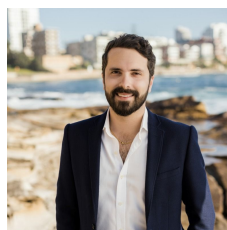
6 Dameeli Avenue Kirrawee NSW

3 1 1

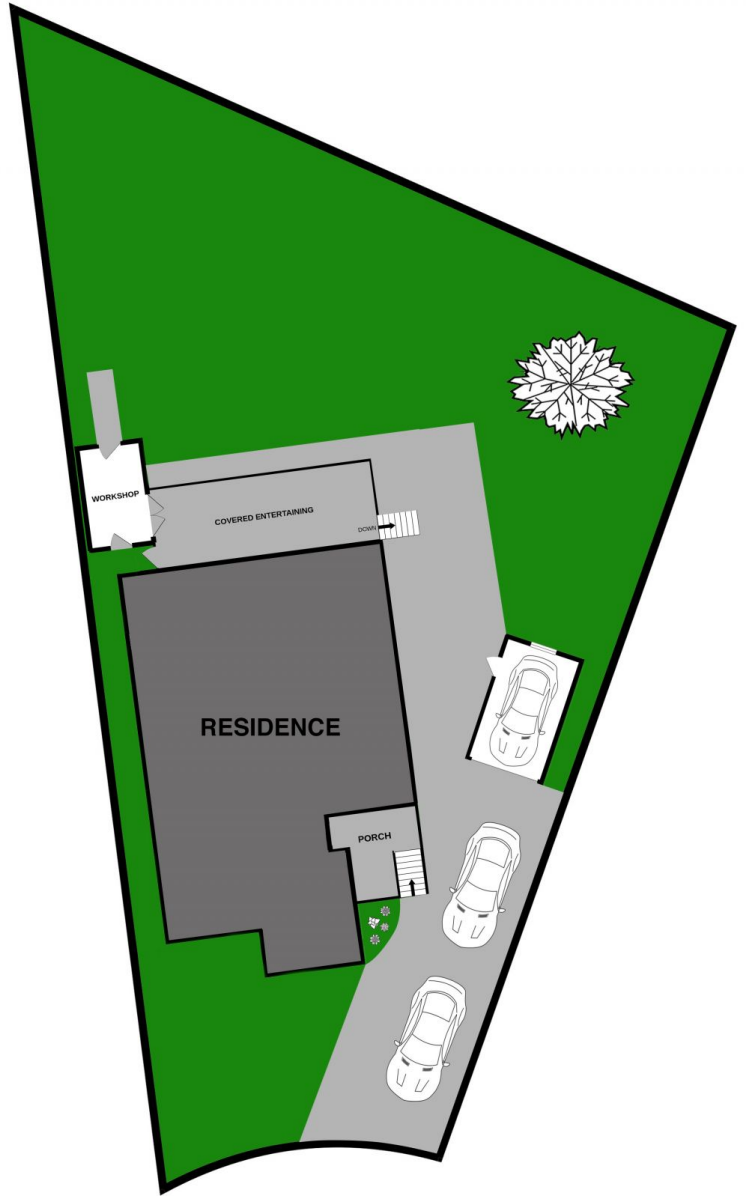
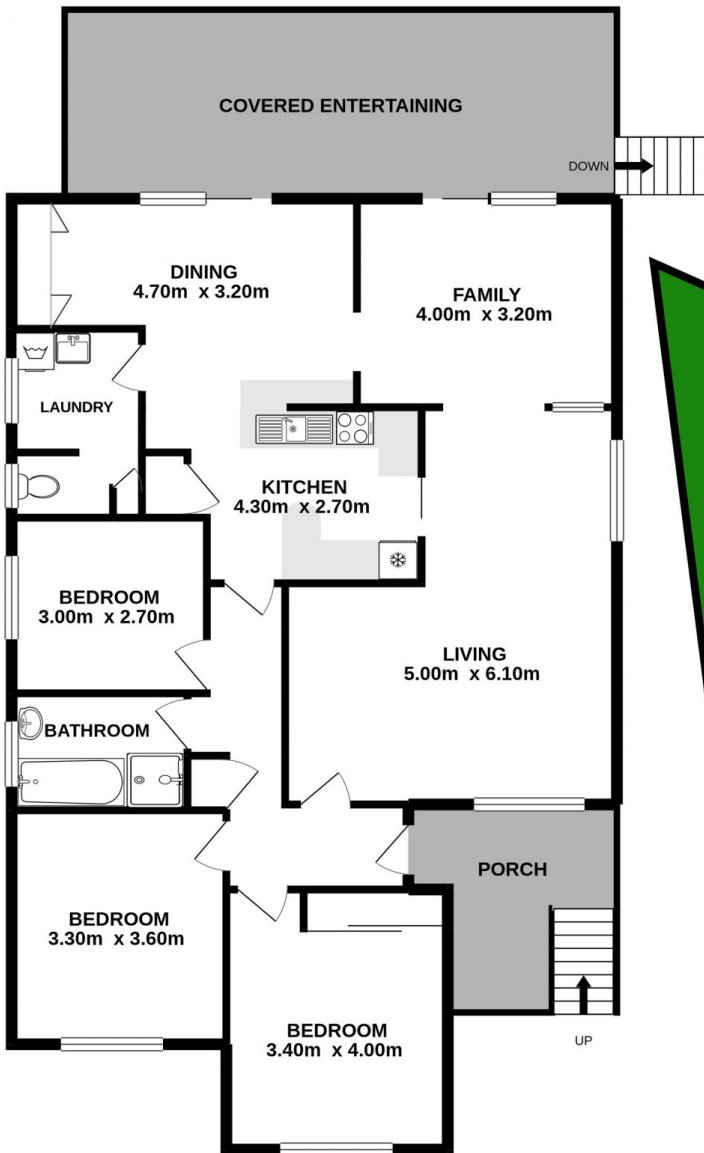
Centrally & conveniently located in Kirrawee, this single level family home provides readymade comfort with plenty of updates, single level layout and immaculate lawns and gardens offering a fantastic opportunity for a growing family seeking a great location on a great size block. Further enhance the existing home or re-build.

Price : \$1,450,000
Land Size : 682.9 sqm
View : <https://www.cronullarealestate.com.au/sale/nsw/sutherland/kirrawee/residential/house/6736932>

- Located at the end of a cul-de-sac on 683sqm approx..
- Set on a near level parcel of land, north/east aspect
- Generously proportioned, multiple living/dining options
- Fresh paint, carpet and floorboards throughout
- Neat and Tidy kitchen, original bathroom
- Outdoor terrace an ideal entertaining area, workshop
- Driveway access to Lock-up-garage, ample off street parking
- Walk to village shops, caf?s/restaurants, schools, trains &buses



Corey Bell
02 9523 9422



Siteplan (not to scale)