



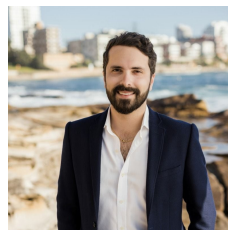
**10/507-511 Kingsway Miranda NSW**

2  1  2 

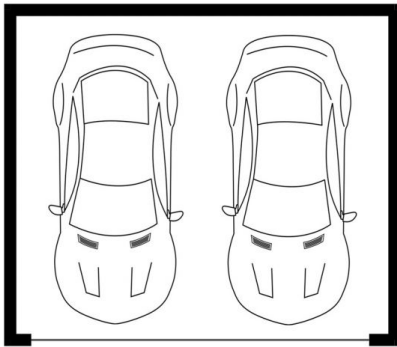
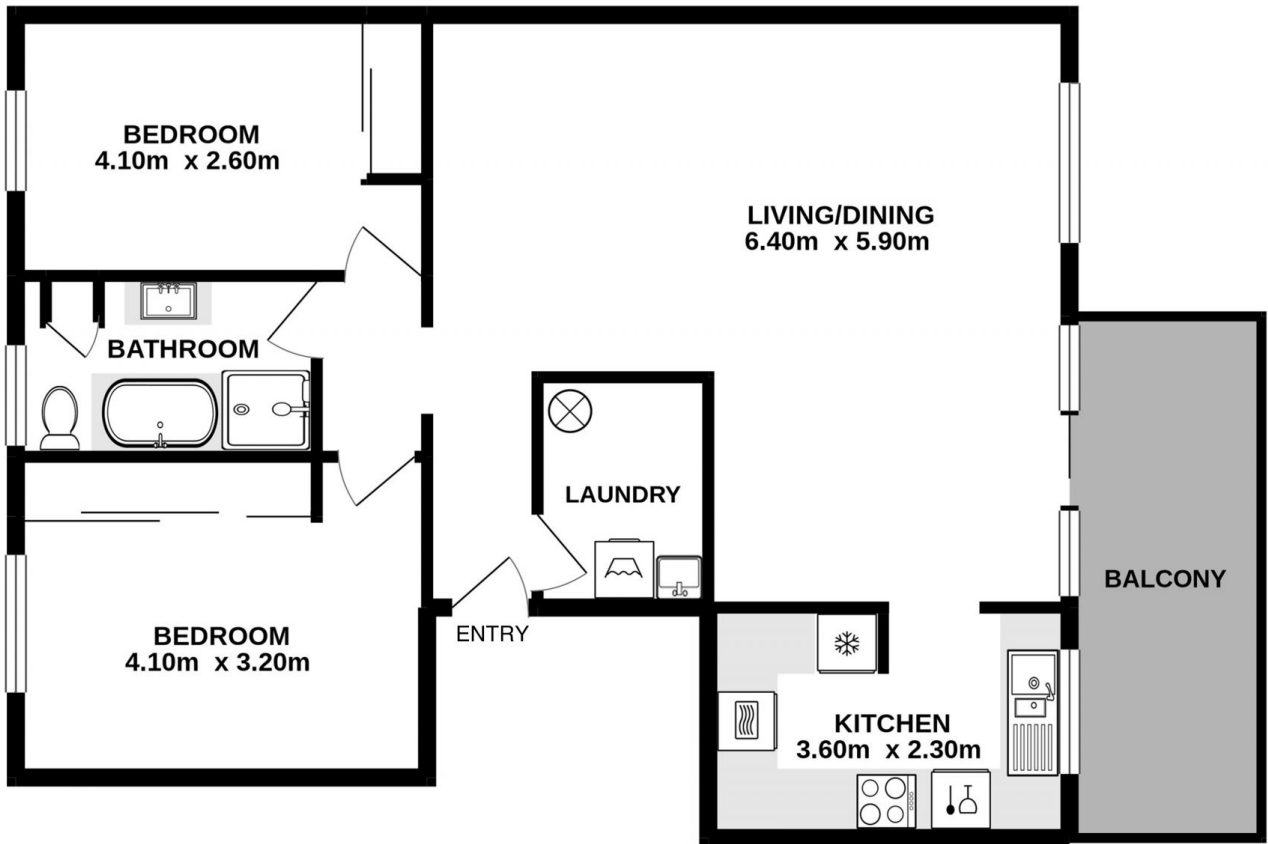
Perfectly positioned for those seeking convenient lifestyle. This larger than average top floor, north facing apartment is just minute's walk to Westfield Miranda, local schools and transport. Private and quietly set at the back of the complex, a fantastic opportunity for first home buyers or investors.

- Generously proportioned & immaculately presented throughout
- Drenched in natural light with city skyline views
- Spacious living/dining opening to a sunny north facing balcony
- Neat kitchen with quality appliances & dishwasher
- Two large bedrooms, both with built-ins & private leafy outlook
- Immaculate bathroom with separate bath & shower
- Double lock up garage in basement, large internal laundry

**Price** : \$ 775,000  
**Building Size** : 125 sqm  
**View** : <https://www.cronullarealestate.com.au/sale/nsw/sutherland/miranda/residential/apartment/6446633>



**Corey Bell**  
**02 9523 9422**



Double Lock Up Garage



10/507-511 Kingsway Miranda

DISCLAIMER: PLANS SHOWN ARE FOR PRESENTATION PURPOSES AND ARE NOT PART OF ANY LEGAL DOCUMENT. ALL MEASUREMENTS AND FIGURES ARE APPROXIMATE.