



24/499-505 President Avenue Sutherland NSW

2 1 2

Set back from the street this unique two level, townhouse style apartment is conveniently located within easy walking distance to Sutherland and Kirrawee's amenities such as cafes, restaurants, shops and transport. Perched in a leafy and very private position within the block this much loved home is a pleasure to view

First floor consists of:

- Sunny undercover terrace ideal for relaxing
- Living room flows to a large second private balcony
- Beautiful spacious kitchen with island/breakfast bar & dining
- Internal laundry with second toilet, ample storage options
- Security video intercom, double tandem garage & ample storage

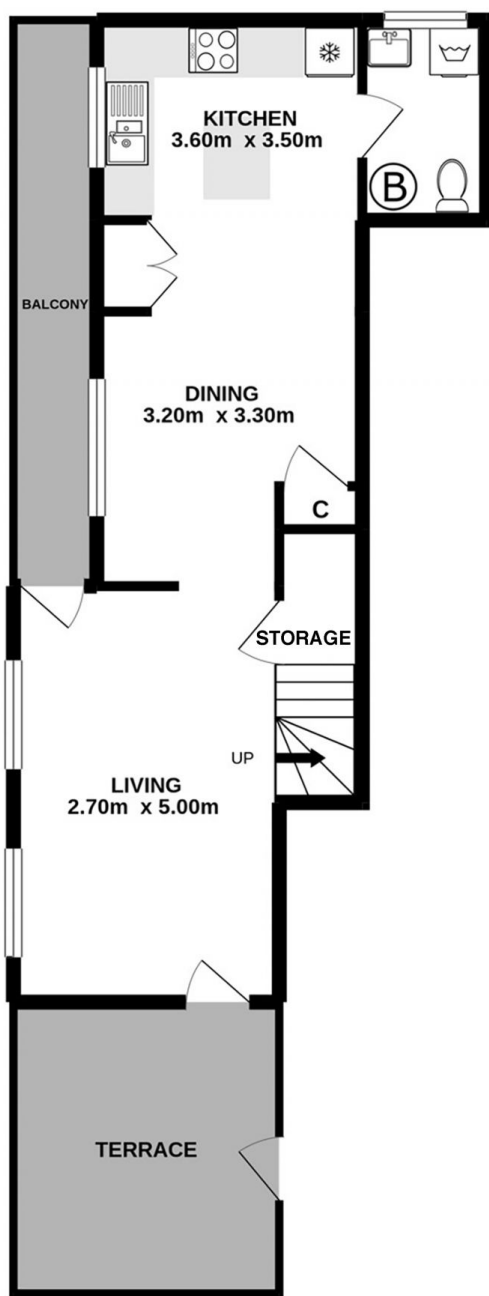
Second floor consists of:

Price : \$ 660,000

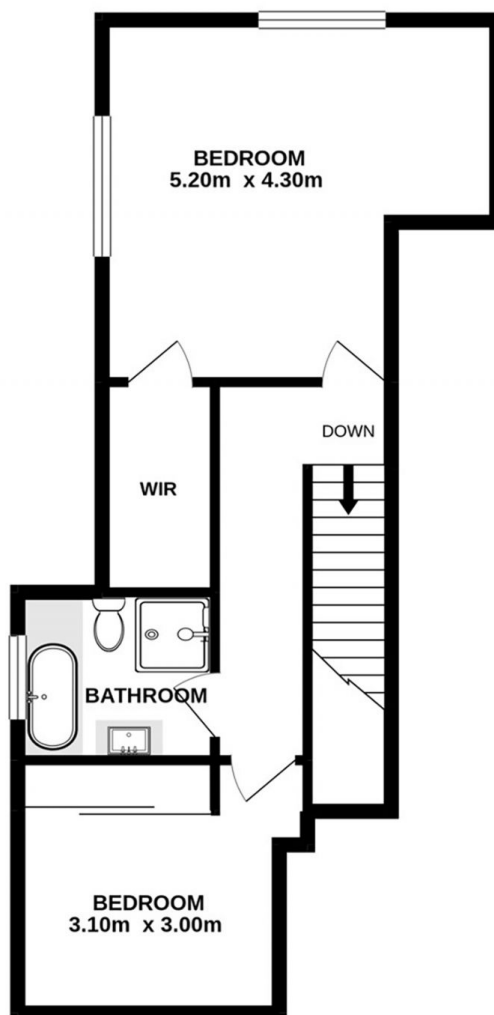
View : <https://www.cronullarealestate.com.au/sale/nsw/sutherland/sutherland/residential/apartment/5945321>



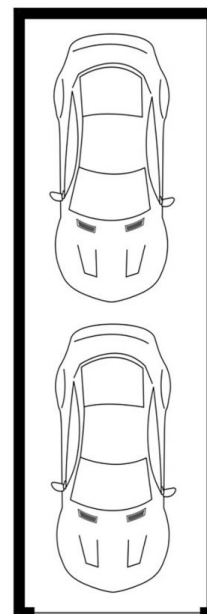
Corey Bell
02 9523 9422



Ground Floor



First Floor



Tandem Lock Up Garage
10.90m x 3.00m