



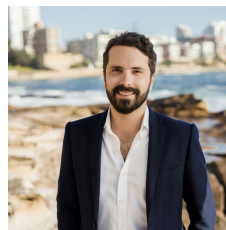
8 Casuarina Road Gymea Bay NSW

5 3 1

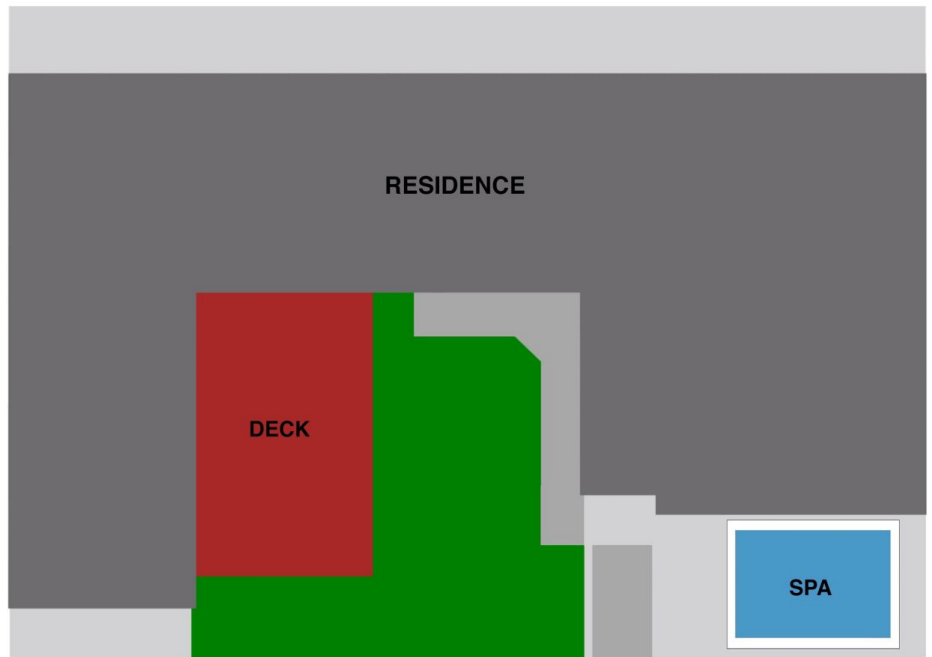
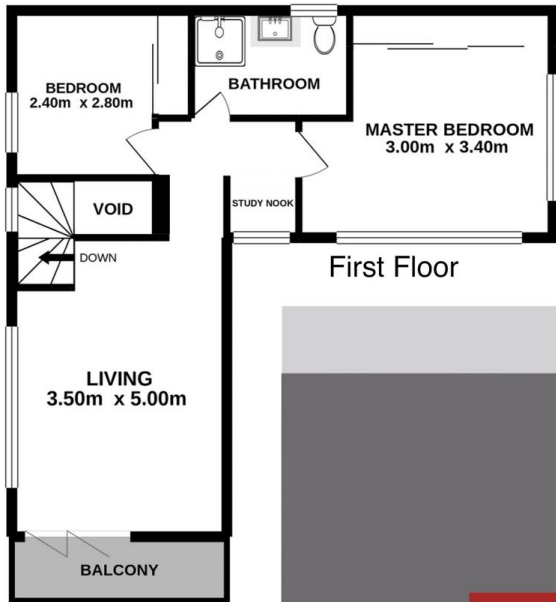
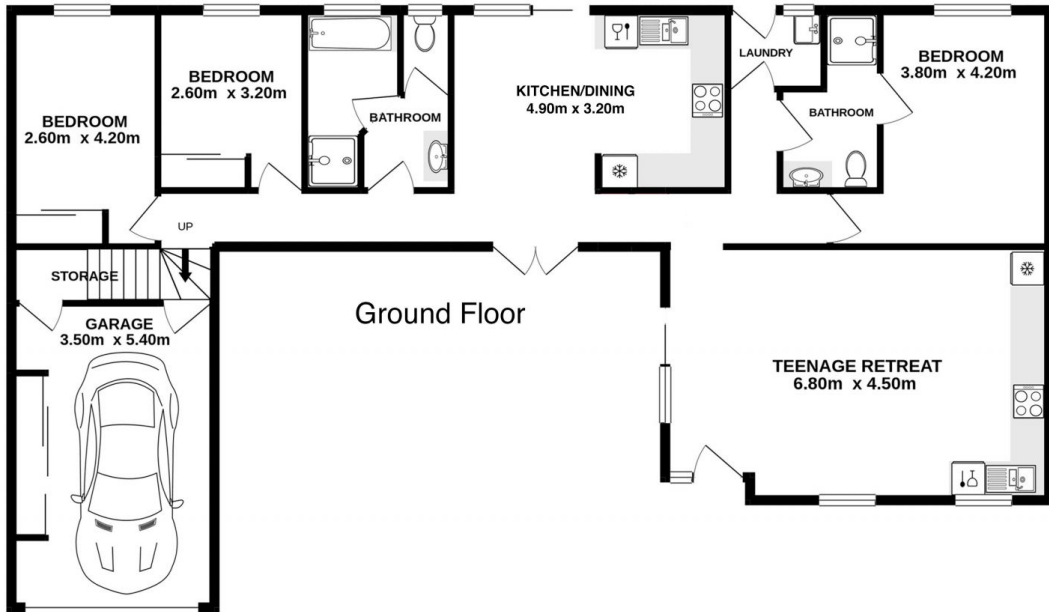
Situated in a very family friendly location and conveniently located within close proximity to parks, local schools & cafes, this delightful double storey family home is ideal for the growing family requiring low maintenance living. Currently features a self-contained teenagers/inlaws retreat.

View : <https://www.cronullarealestate.com.au/sale/nsw/sutherland/gymea-bay/residential/house/5808426>

- Double storey family home on sunny low maintenance block
- Multiple indoor & outdoor living/dining options
- Self-contained in-law accommodation on the ground floor
- Modern eat in kitchen with quality appliances & dishwasher
- Upstairs lounge room opening to sunny balcony
- Level grassed yard with entertainers deck & Jacuzzi
- Five bedrooms in total with two masters, all with built-in-robos



Corey Bell
02 9523 9422



Site Plan (not to scale)



8 Casuarina Road Gymea Bay

DISCLAIMER: PLANS SHOWN ARE FOR PRESENTATION PURPOSES AND ARE NOT PART OF ANY LEGAL DOCUMENT. ALL MEASUREMENTS AND FIGURES ARE APPROXIMATE.