

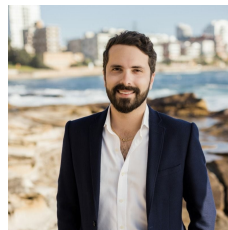
**8/25 Hill Street Woolooware NSW**

2 1 1

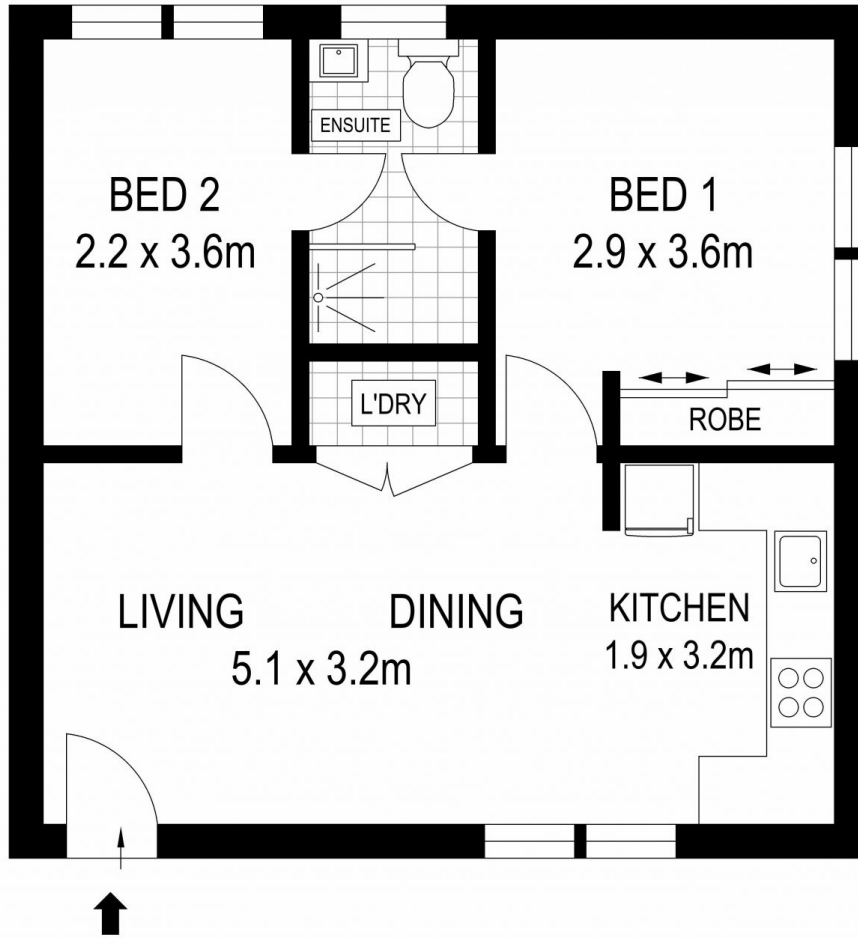
Offering a smart investment or first home, this private & comfortable two bedroom apartment offers a super convenient location within a short stroll to Woolooware's Station & shopping village, whilst only minutes walk to Cronulla's beaches & café lifestyle.

**Building Size** : 48 sqm  
**View** : <https://www.cronullarealestate.com.au/sale/nsw/sutherland/woolooware/residential/apartment/5722153>

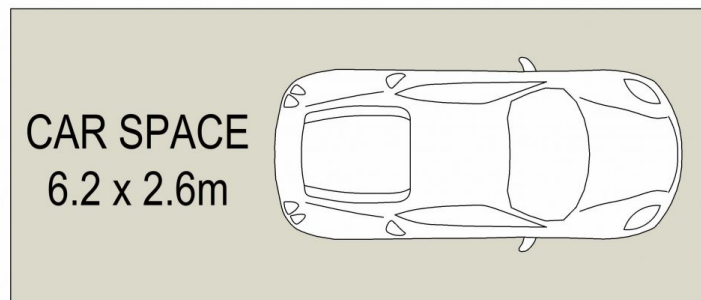
- Privately set back from the street on the top floor
- Well maintained, two storey boutique block of eight
- Light filled interiors with floating floors in lounge room
- Well proportioned & open plan living, dining & kitchen
- Contemporary kitchen with stone benches & dishwasher
- Two generous sized bedrooms, main with built-in-robe
- Coastal feel with hamptons style wall paneling in bedrooms
- Renovated, two way ensuite style bathroom
- Single registered car space, internal laundry, reverse cycle A/C



**Corey Bell**  
02 9523 9422



FIRST FLOOR



GROUND FLOOR



8/25 Hill Street, Woollooware

DISCLAIMER: THIS IS FOR ILLUSTRATIVE PURPOSES ONLY, ALL DIMENSIONS ARE APPROXIMATE AND IT DOES NOT CONSTITUTE PART OF ANY LEGAL DOCUMENTS.

