



332 President Avenue Gymea NSW

5 3 2

A rare opportunity to secure a substantial five bedroom brick double storey residence in the heart of Gymea. Currently rented with two separate tenancies, divided by front and back entry courtyards for each. Ideal for an investment opportunity currently achieving \$1,050 per week rental return or open up as one large family home. The opportunities are endless.

Front home; single level with 3 bedrooms & sunny enclosed north facing yard

Spacious lounge room, modern open plan eat-in kitchen with breakfast bar

Large master bedroom, two additional bedrooms & separate study/storage

Rear home; double storey with two spacious bedrooms, master with ensuite

Walk upstairs to huge open plan lounge/dining, kitchen &

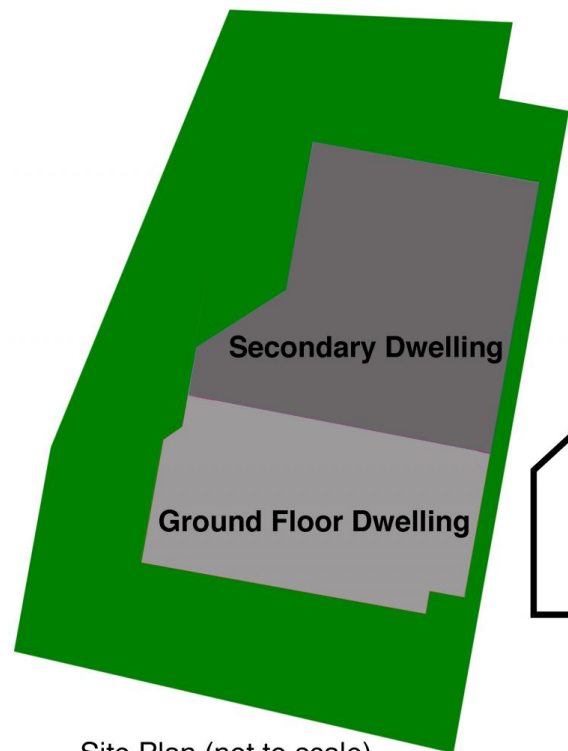
View : <https://www.cronullarealestate.com.au/sale/nsw/sutherland/gymea/residential/house/5722141>



Mark Wigley
02 9523 9422

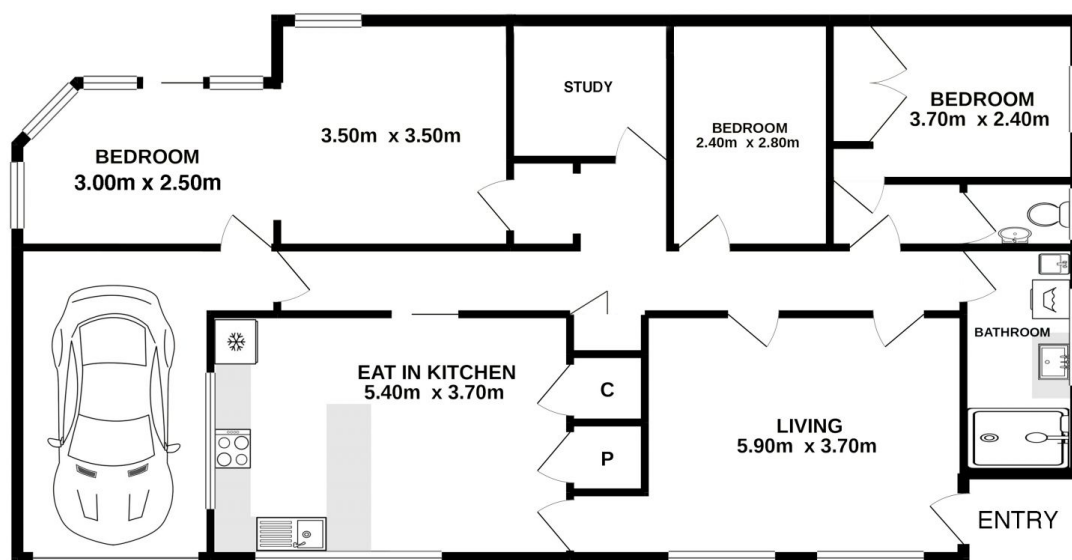
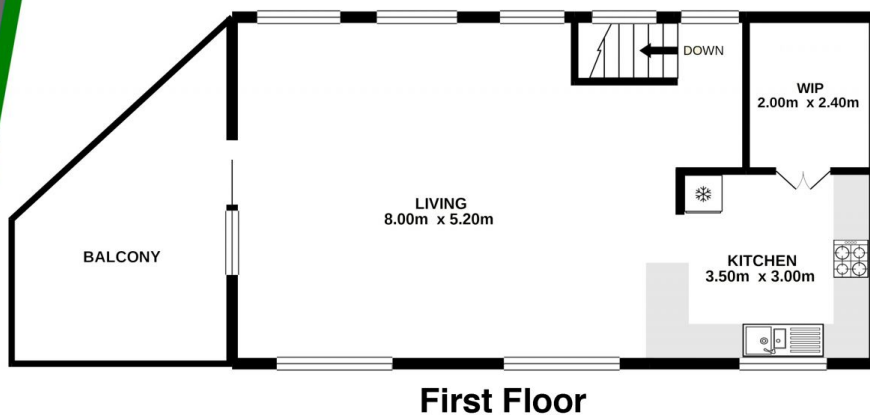
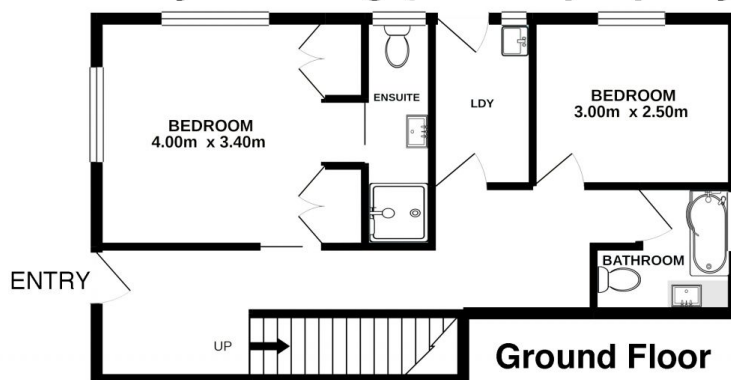


Corey Bell
02 9523 9422



Site Plan (not to scale)

Secondary Dwelling (rear of property)



Ground Floor Dwelling

Cronulla
real estate

332 President Ave GyMEA

DISCLAIMER: PLANS SHOWN ARE FOR PRESENTATION PURPOSES AND ARE NOT PART OF ANY LEGAL DOCUMENT. ALL MEASUREMENTS AND FIGURES ARE APPROXIMATE.