



113 Tasman Street KURNELL NSW

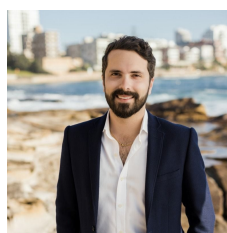
3 1 1

This single level family home is admired for its central location within the highly sought after beachside suburb of Kurnell.

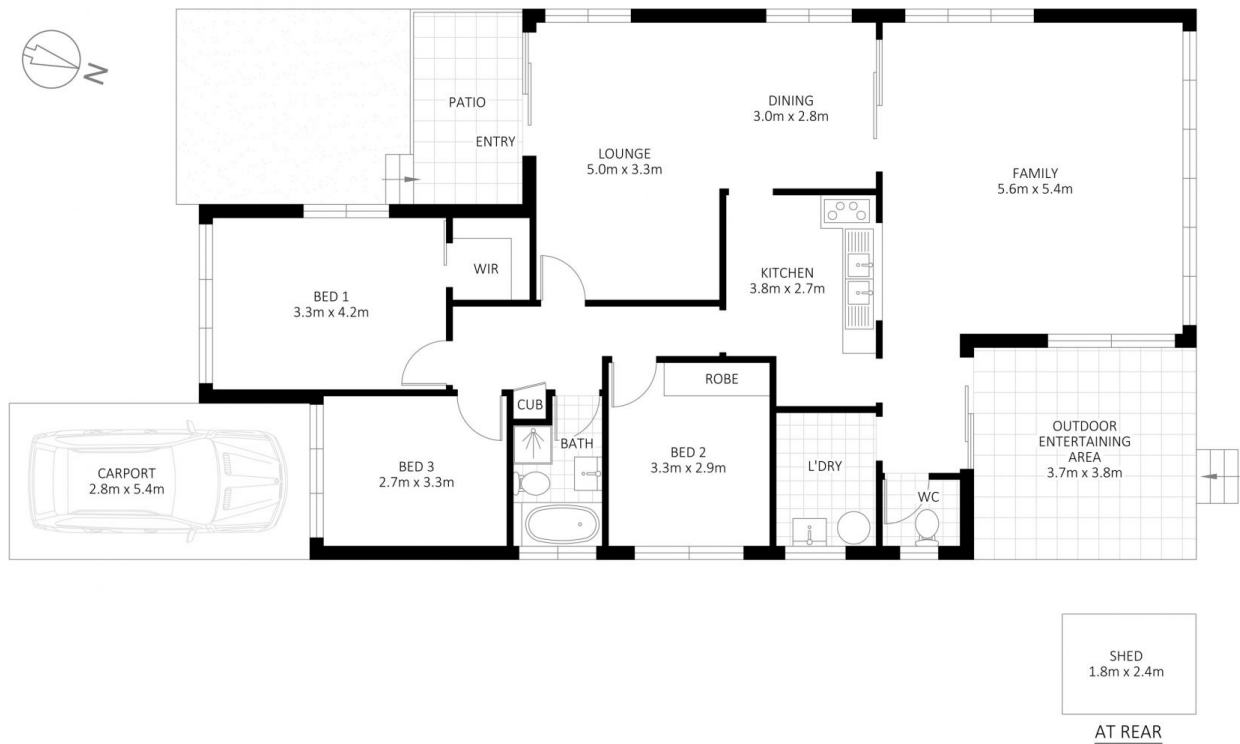
The perfect opportunity for a young family, builder or investor to secure a home within walking distance to the beach & everything the Kurnell lifestyle has to offer including cafes, schools, restaurants and still so close to Cronulla, Caringbah business hub and with easy access to the City.

- North facing rear yard
- Rear access towards beach
- Land size circa 558m2
- Council Rates \$375.90 per quarter
- Water Rates \$192.11 per quarter

Land Size : 550.1 sqm
View : <https://www.cronullarealestate.com.au/sale/nsw/sutherland/kurnell/residential/house/5721866>



Corey Bell
02 9523 9422



113 Tasman Street, Kurnell

DISCLAIMER: PLANS SHOWN ARE FOR PRESENTATION PURPOSES AND ARE NOT PART OF ANY LEGAL DOCUMENT. ALL MEASUREMENTS AND FIGURES ARE APPROXIMATE.