



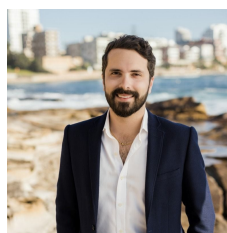
14/1 Ramu Close SYLVANIA WATERS NSW

3 2 1

Tucked away at the rear of a resort inspired complex, this full brick, pet-friendly townhouse presents an excellent readymade investment opportunity, equally appealing to young families. It is conveniently located, only footsteps from local shops and cafs.

- Open plan living and dining area enjoys seamless outdoor flow
- Great sized undercover entertainers deck and low maintenance courtyard
- Renovated well-equipped kitchen with ample cupboard space
- Three upper level bedrooms are fitted with built-in robes
- Master features a renovated ensuite and opens to the sunlit terrace
- Updated main bathroom includes separate bath and shower

View : <https://www.cronullarealestate.com.au/sale/nsw/sutherland/sylvania-waters/residential/townhouse/5721856>



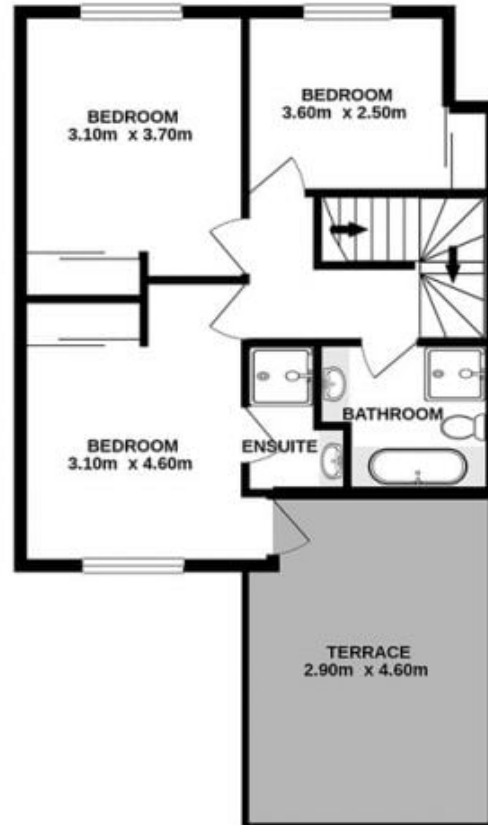
Corey Bell
02 9523 9422



Mark Wigley
02 9523 9422



Ground Floor



First Floor