



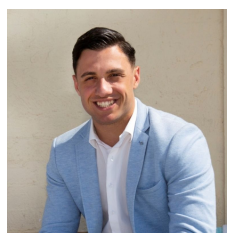
23 Benjamin Road MOUNT PRITCHARD NSW

7 4 4

Catering to large or extended families, this ultra-spacious residence captures leafy district outlooks from upstairs. It delivers a modern touch with supreme privacy and enjoys a peaceful quite address within minutes of village shops and bus transport.

- Seven large bedrooms, all bedrooms with built in wardrobes
- Main bedroom with over-sized "His and Her's" walk in wardrobe and large en-suite
- Light filled interiors enhanced by soaring ceilings with multiple living areas throughout
- Over-sized down stairs bedroom is the perfect retreat that may suit teenage/in law accommodation
- Modern spacious kitchen conveniently designed with a walk in pantry
- The indoor flows seamlessly to covered alfresco

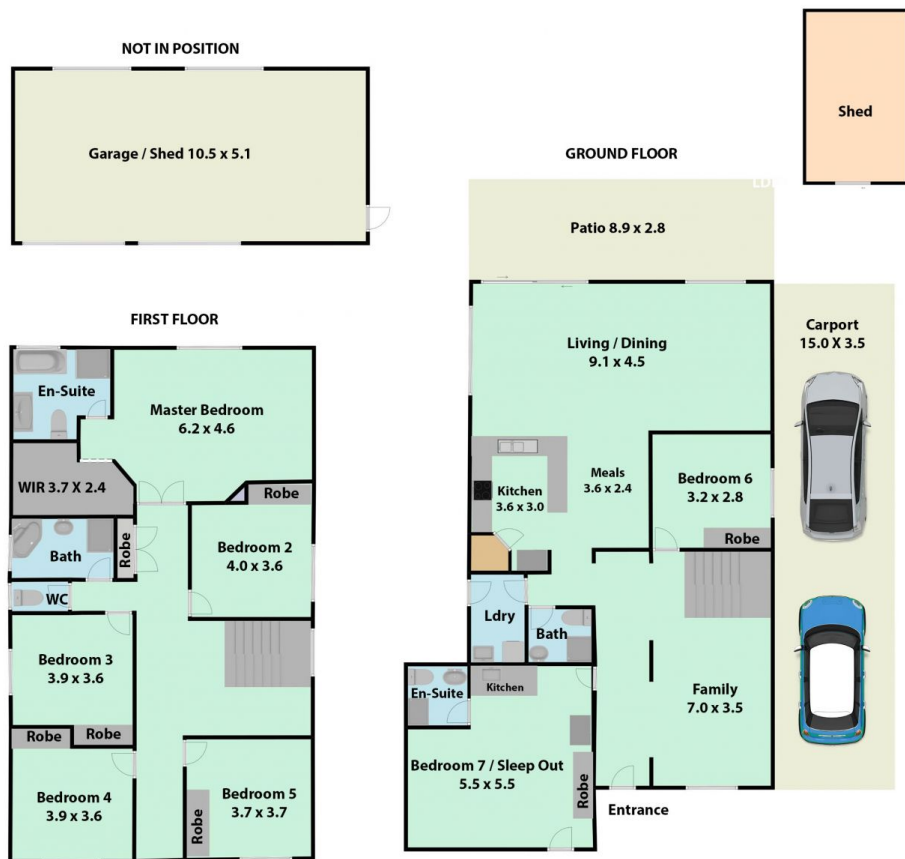
View : <https://www.cronullarealestate.com.au/sale/nsw/li-verpool-fairfield/mount-pritchard/residential/house/5721840>



Domenic Santaguida
02 9523 9422



Reno Santaguida
02 9523 9422



23 Benjamin Road, Mt Pritchard

All measurement are approximate. For illustrative purposes only.

