



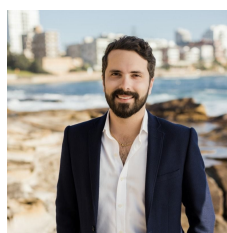
## 12/621 Kingsway MIRANDA NSW

2 2 1

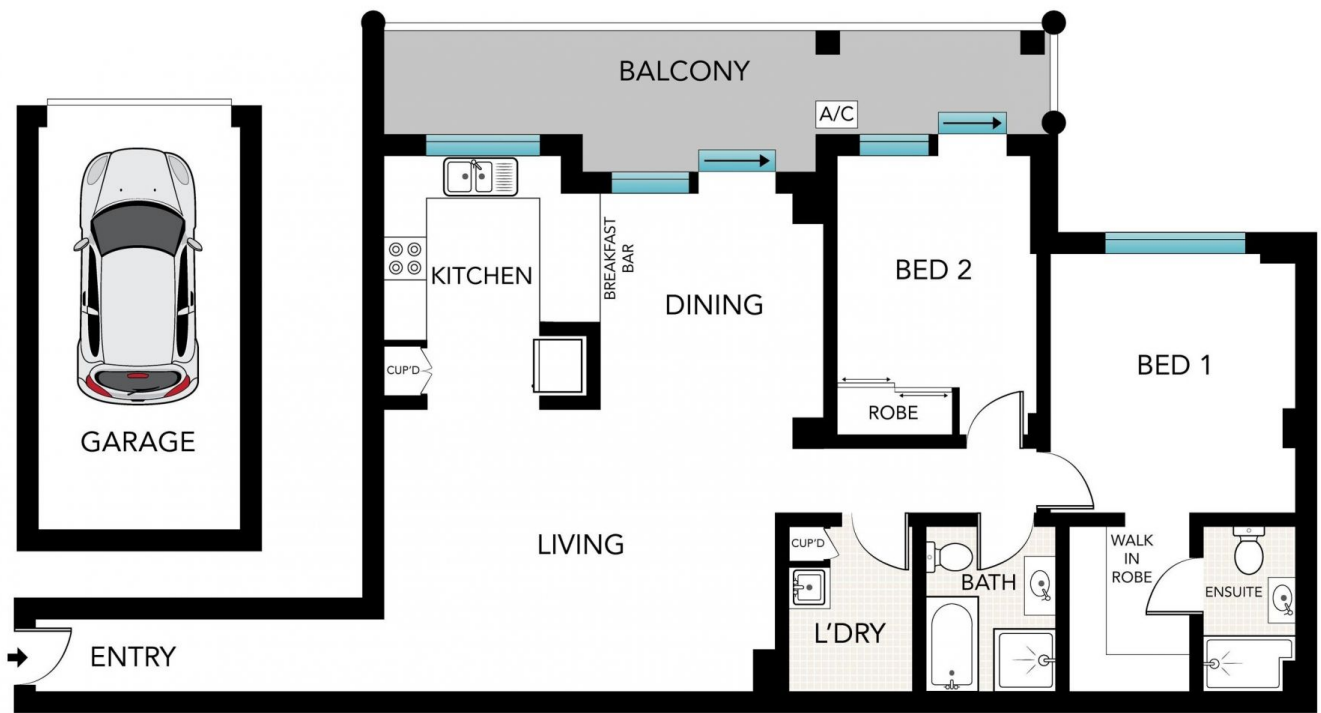
This modern apartment will impress with its light filled north facing aspect, and open outlook to Botany Bay and the city skyline. Conveniently situated adjacent to Westfield Miranda and within footsteps to local schools, shops and restaurants.

- Third floor of a security building with lift access
- Generously proportioned and drenched in natural light
- Large living/dining spaces with floating timber floors
- Modern kitchen with gas cooking & s/steel appliances
- Sunny North facing entertainers balcony
- Main bedroom includes walk in robe & ensuite
- Well appointed main bathroom with separate bath & shower
- Single lock up garage, int laundry & split system A/C

**Building Size** : 126 sqm  
**View** : <https://www.cronullarealestate.com.au/sale/nsw/sutherland/miranda/residential/apartment/5721629>



**Corey Bell**  
02 9523 9422



Scale in metres. Indicative only. Dimensions are approximate. All information contained herein is gathered from sources we believe to be reliable. However, we cannot guarantee its accuracy and interested persons should rely on their own enquiries.

