



31/1-9 Warburton Street GYMEA NSW

2 1 1

Conveniently positioned within walking distance from everything GyMEA has to offer, this elevated ground floor apartment is drenched in natural light, equipped with modern interiors and a generous floorplan, providing the perfect opportunity for first home buyers or investors.

- Private & secure, elevated ground floor position
- Spacious living/dining opening to a wide alfresco balcony
- Stylish kitchen with stainless steel appliances
- Two good sized bedrooms, both with built-in-robos
- Renovated bathroom with separate bath & shower
- Single lock up garage, internal laundry & split system A/C
- Shops, restaurants, cafes & transport at your doorstep

Size: Internal 82 sqm + garage 17 sqm = 99 sqm total

Strata: Approx. \$578.45 per quarter

Council: Approx. \$250.00 per quarter

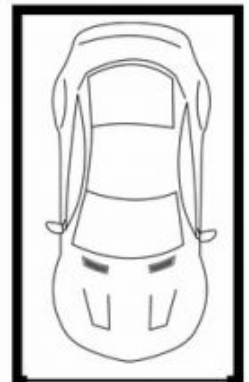
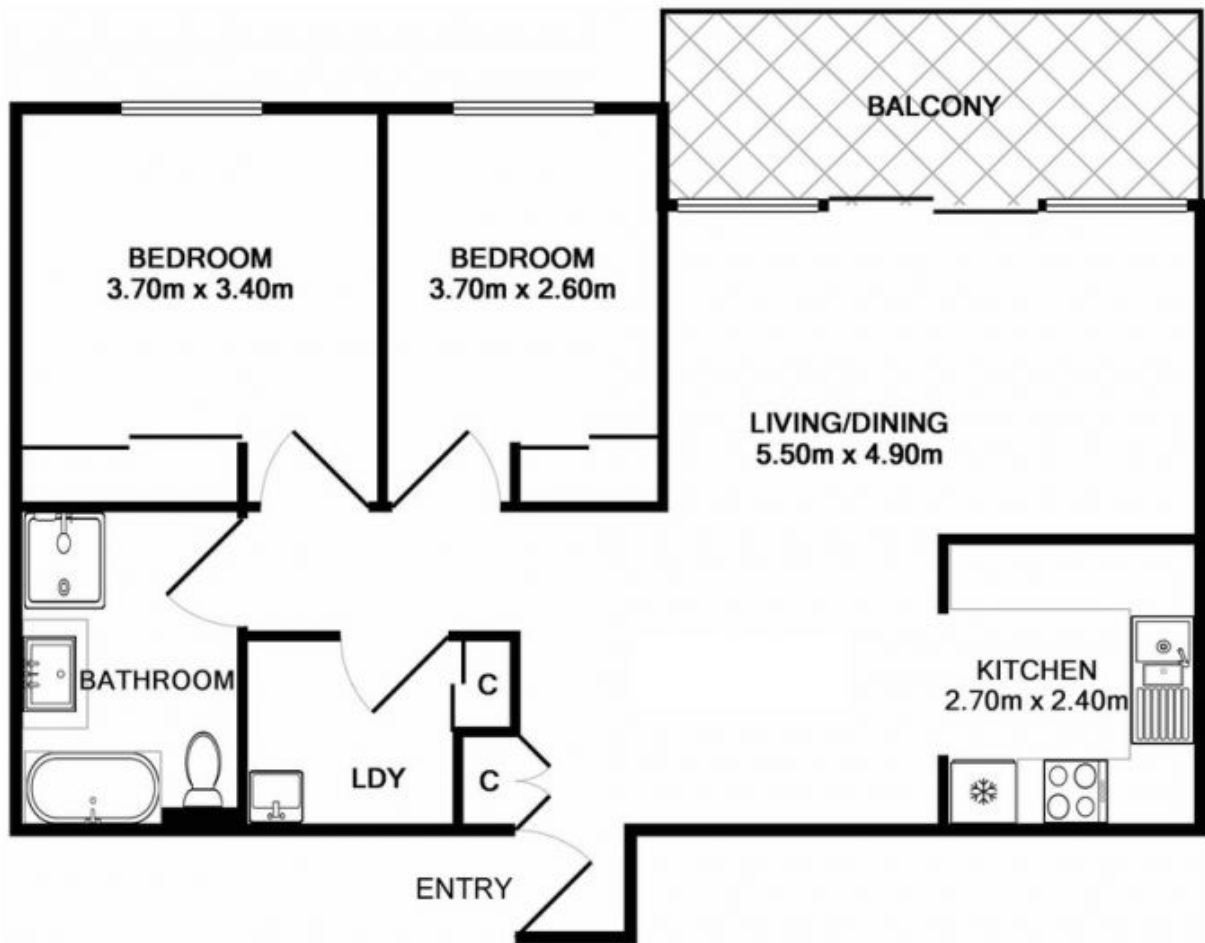
Building Size : 99 sqm

View

: <https://www.cronullarealestate.com.au/sale/nsw/sutherland/gyMEA/residential/apartment/5721562>



Corey Bell
02 9523 9422



Lock Up Garage