

5/52-56 Manchester Road GYMEA NSW

3 2 1

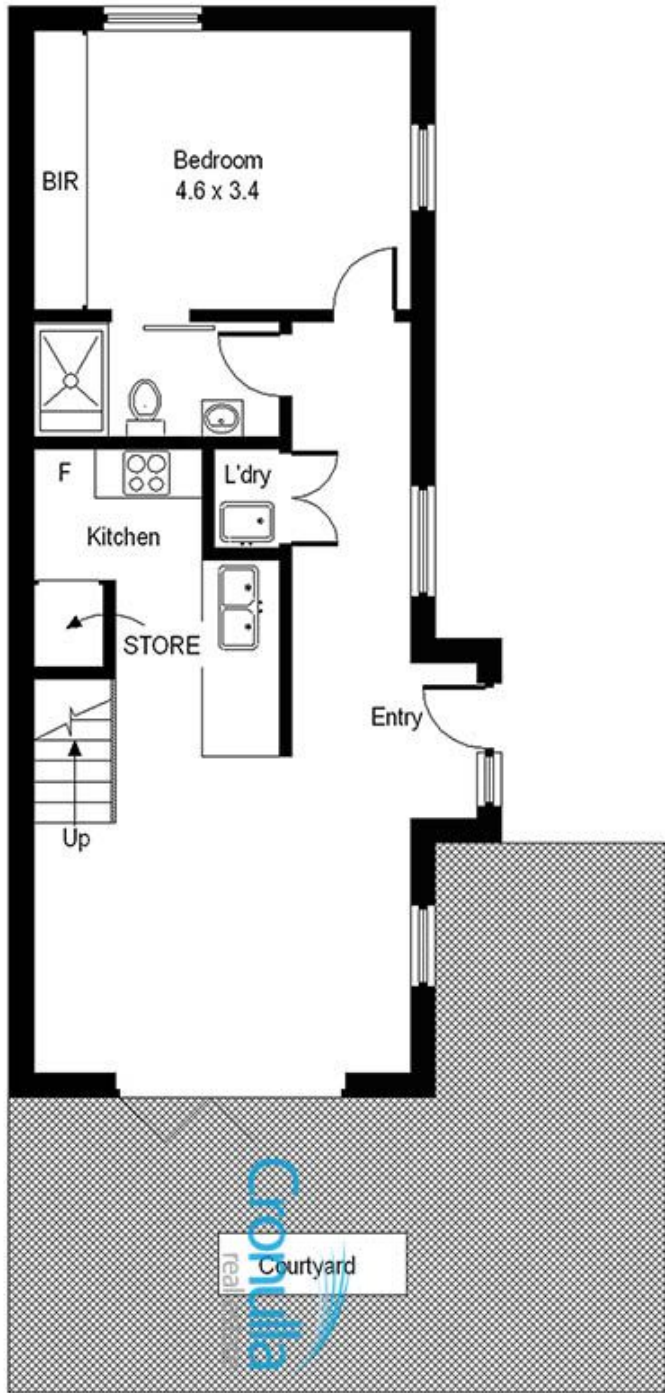
A low maintenance lifestyle of carefree convenience and stylish contemporary living is offered by this unique upmarket townhouse. Situated in a young, modern complex, nestled amongst lush garden environs it provides a generous 189m² of light, space and privacy with the ease of being only metres to popular Gymea Shopping Village and Station.

Price : \$ 620,000
Building Size : 189 sqm
View : <https://www.cronullarealestate.com.au/sale/nsw/sutherland/gymea/residential/townhouse/5720211>

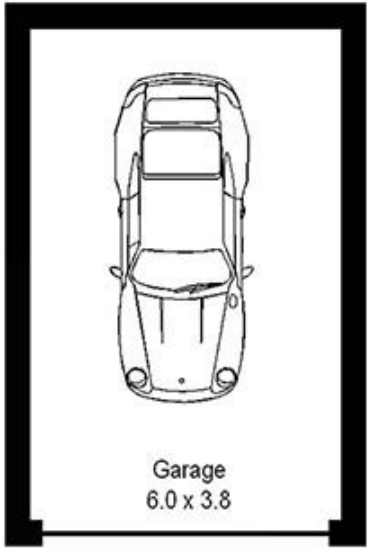
Immediately impressive and beautifully designed, the spacious open plan interior of the home is flooded with natural light from its glorious north/west aspect, further enhanced by the seamless flow via bi-fold doors to a sun filled courtyard, perfect for those who like to entertain. There is a well equipped Caesar Stone kitchen featuring glass splash back, and stainless steel Fisher and Paykel appliances and two tastefully appointed bathrooms.



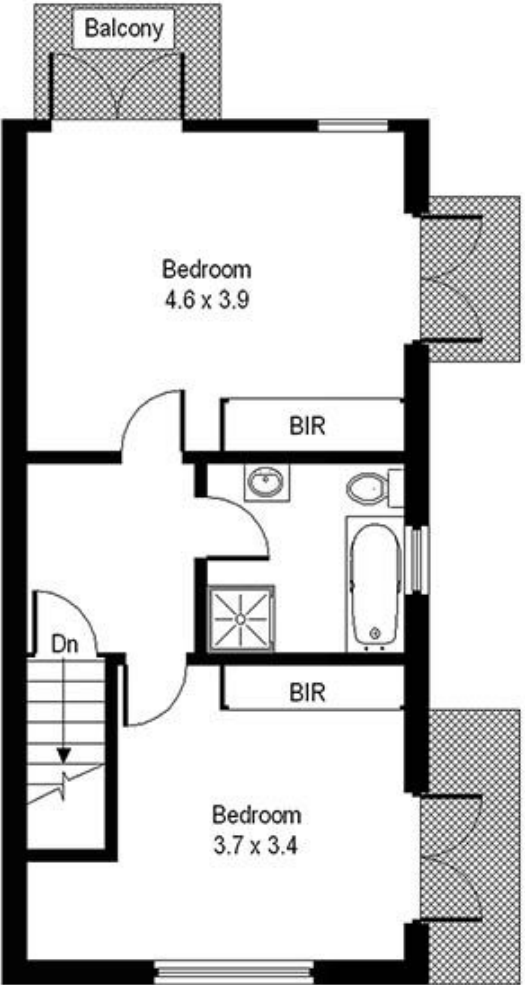
Emma Yacoubian
02 9523 9422



Ground Floor



Garage
(Not Shown In Actual Location / Orientation)



First Floor

5/52 Manchester Road, Gymea

Please note: All stated dimensions are approximate only. Particulars given are of general information only and do not constitute any representation on the part of the vendor or agent. (ID48976)