

6/30 Girrillang Road CRONULLA NSW

2 1 2

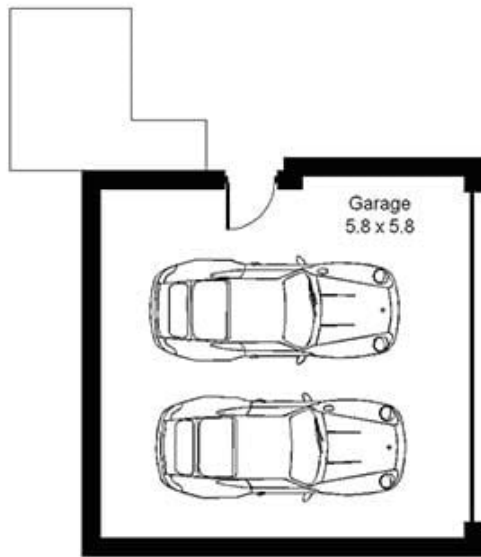
Positioned on the top floor at the rear of a small, modern block this super spacious apartment offers a private haven within a fantastic lifestyle location moments from the sand and surf of Cronulla's beaches.

Contemporary in design the apartment features a practical open floor plan with defined living and dining areas, large entertainer's balcony with private leafy outlook, stylish granite kitchen, two generous sized bedrooms both with mirrored built-in robes, tastefully appointed bathroom which includes both bath and shower, internal laundry and large double garage with storage area.

Inspect and be impressed.

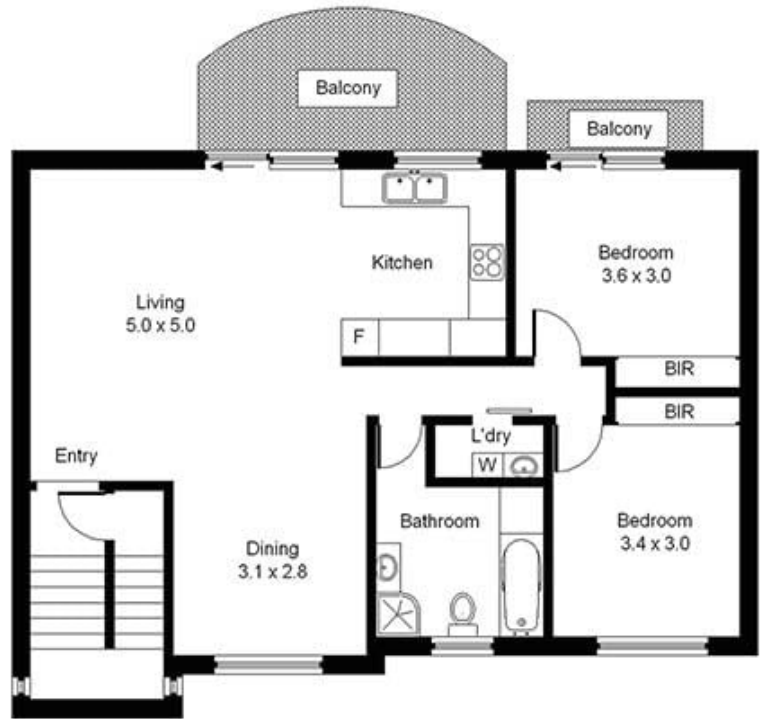
- ? Top floor at rear of small block of only six
- ? Super spacious open plan interior

Building Size : 135 sqm
View : <https://www.cronullarealestate.com.au/sale/nsw/sutherland/cronulla/residential/apartment/5720209>



Garage

(Not Shown In Actual Location / Orientation)



6/30 Girrilang Road, Cronulla

Please note: All stated dimensions are approximate only. Particulars given are of general information only and do not constitute any representation on the part of the vendor or agent. (ID46544)

