



154 Nicholson Parade CRONULLA NSW

3 2 2

A superb corner block location in the heart of the ever popular South Cronulla peninsular is the setting for this solid brick 1960's home revealing impressive classic proportions plus multiple options for immediate occupation, renovation or redevelopment.

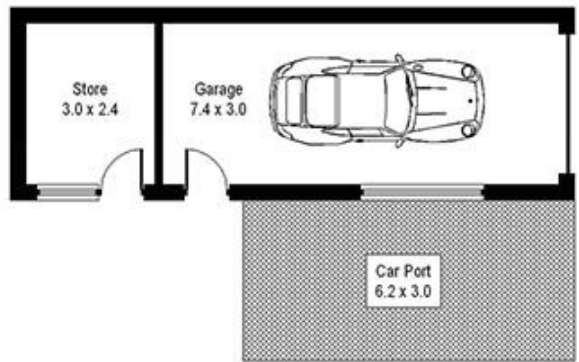
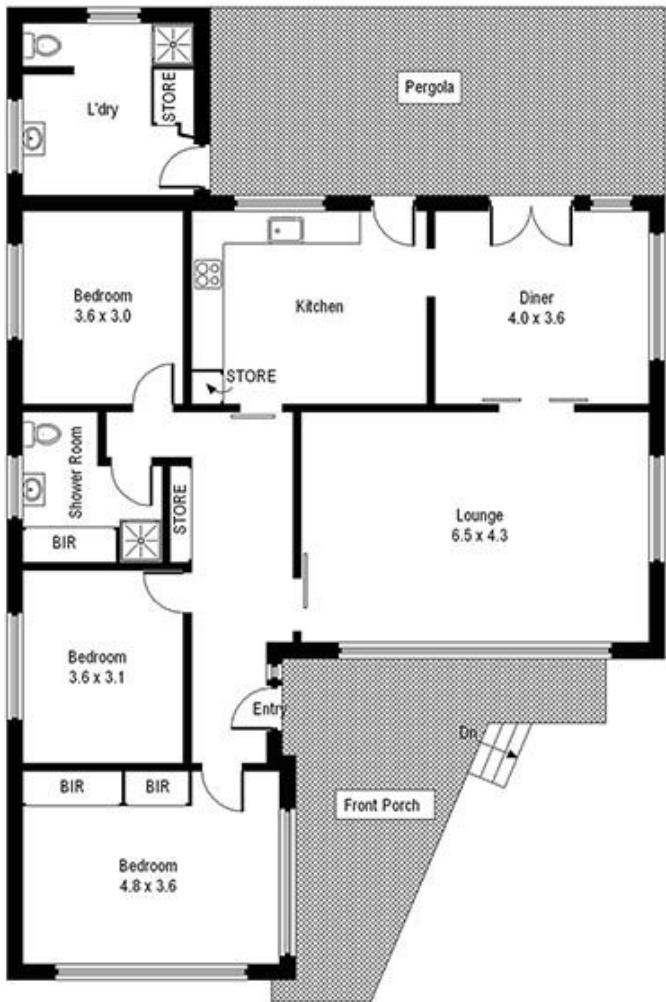
Proudly presented in immaculate original condition throughout, this one owner home boasts expansive light filled living areas, high ceilings, spacious bedrooms and well presented original kitchen and bathrooms within a very practical and workable floor plan.

Outside the large, undercover veranda leads to a low maintenance yard plus single lock up garage with separate workshop and carport.

Inspect and be excited about the possibilities that this fantastic property presents.

View : <https://www.cronullarealestate.com.au/sale/nsw/sutherland/cronulla/residential/house/5720193>

Single level, double brick home on 548m2 corner block



(Not Shown In Actual Location / Orientation)

Garage / Store

154 Nicholson Pde Cronulla

Approximate Gross Internal Area :- 134 sq m

Garage / Store :- 30 sq m

Total :- 164 sq m



Please note: All stated dimensions are approximate only.
Particulars given are of general information only and do not constitute any representation on the part of the vendor or agent.

Cronulla
real estate