



**20 Richmount Street CRONULLA NSW**

3 2 2

Suited to a young family, professional couple or downsizers not quite ready for apartment living this charming, character filled home has been meticulously refurbished offering a beautifully crafted, elegant and light filled living environment with the finest in contemporary appointments and classic original features.

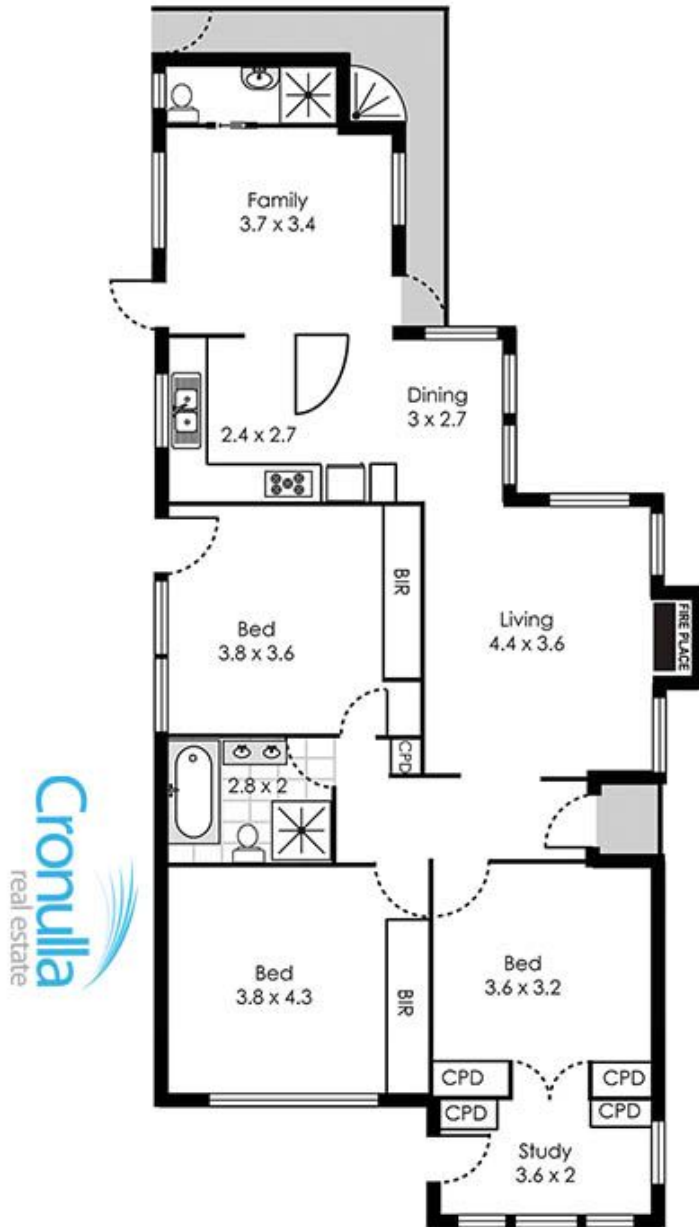
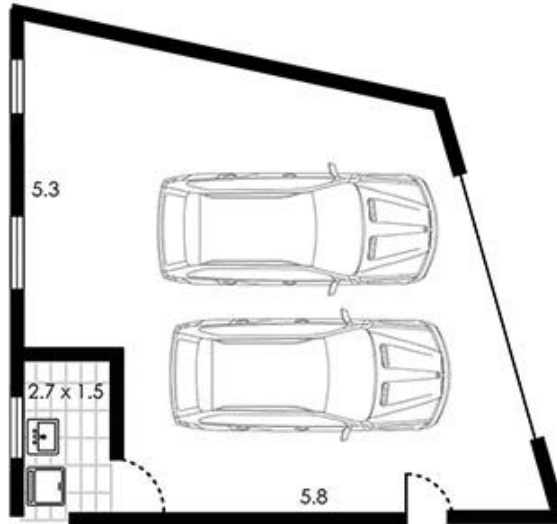
**View** : <https://www.cronullarealestate.com.au/sale/nsw/sutherland/cronulla/residential/house/5720100>

Occupying a 436m2 corner block with easy care low maintenance grounds it is set in one of the most sought after positions in South Cronulla, conveniently located within walking distance to Cronulla mall, moments to Shelly Beach and Esplanade or alternatively the shores of Gunnamatta Bay.

Comprising of: Solid, original timber flooring, formal living area including beautiful reproduction gas fireplace, cosy family room and separate dining, stylish and functional

# Cronulla

20 Richmount Street



Please note: all stated dimensions are approximate only. Particulars given are or general information only and do not constitute any representation on the part of the vendor or agent.