



5/1-7 Clyde CRONULLA NSW

2 2 2

This delightful, garden style apartment is situated in one of South Cronulla's most sought after quiet and convenient locations. Set on the ground floor of a modern security complex it comes with its own private courtyard complimented by lush landscaped surrounds.

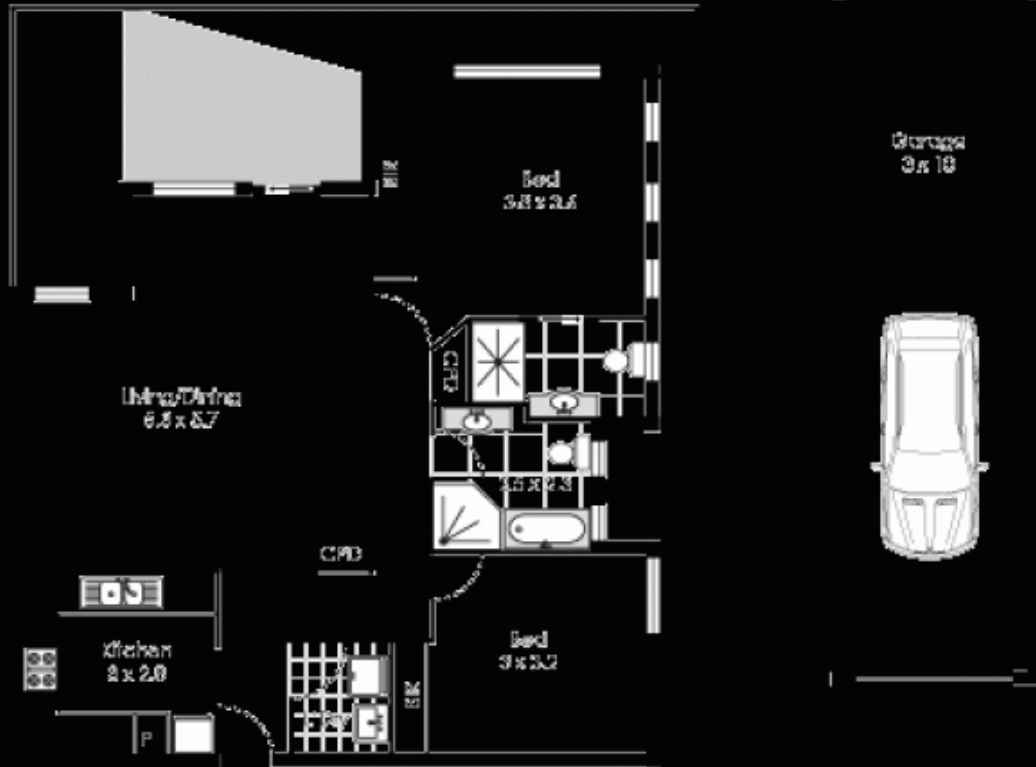
View : <https://www.cronullarealestate.com.au/sale/nsw/sutherland/cronulla/residential/apartment/5720093>

The stylish, contemporary interior and very spacious proportions of the apartment along with the convenience of lift access from the large tandem garage to your door makes this an ideal downsize option.

Features include: Large, practical floor plan consisting of open plan living and dining flowing through glass sliding doors to tiled courtyard, smart, granite kitchen with Smeg appliances, two large bedrooms both with built-in robes plus ensuite to main, tastefully appointed full main bathroom, internal laundry, underground, security tandem garage, lift access and reverse cycle air conditioning.

Cronulla

5/1-7 Clyde Avenue



Please note: all stated dimensions are approximate only. Particulars given are or general information only and do not constitute any representation on the part of the vendor or agent.