



17/24 Kiora Road MIRANDA NSW

2 1 1

A quality, contemporary makeover of this two bedroom apartment has resulted in a stunning interior of crisp modern styling and a fresh uplifting atmosphere.

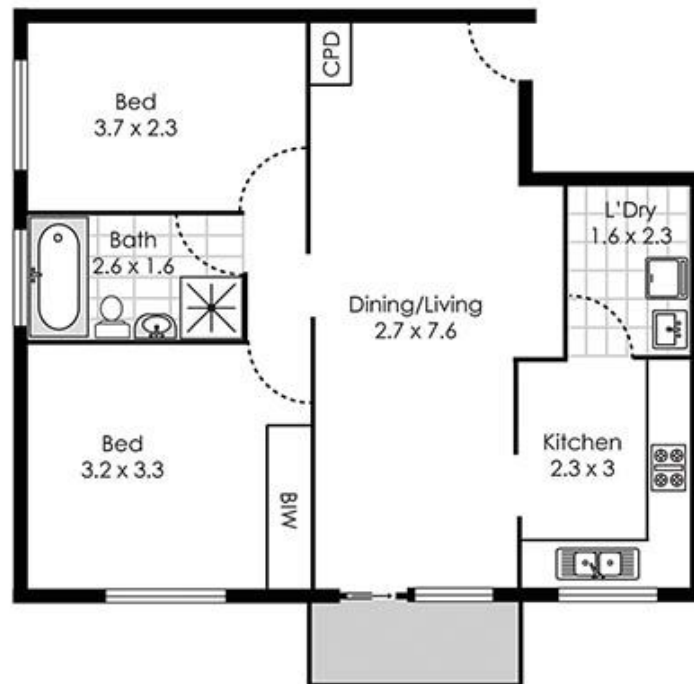
Building Size : 92.8 sqm
View : <https://www.cronullarealestate.com.au/sale/nsw/sutherland/miranda/residential/apartment/5720092>

Situated on the second floor at the rear of a well maintained security block it is in a super convenient location within walking distance to Miranda Westfield, station and local amenities.

Features include: Tasteful fixtures and fittings throughout along with new carpet and attractive floating timber flooring, spacious lounge/dining room opening to covered east facing balcony with pleasant outlook, new stylish kitchen with adjoining laundry, two good sized bedrooms, the main including mirrored built-in robes, full main bathroom with separate bath and shower and single lock up garage with

Miranda

17/24-26 Kiara Road



Please note: all stated dimensions are approximate only. Particulars given are or general information only and do not constitute any representation on the part of the vendor or agent.