

6/50 Wills Road WOOLLOOWARE NSW

2 1

This delightful two bedroom, terrace style apartment is privately situated at the rear of a small block of six offering its own private entrance and unique two level living. Presented in excellent condition throughout it is set in a super convenient location only footsteps to Woollooware shops, and station.

Filled with natural light from its north/east aspect, the apartment has ground level entry into a spacious living area featuring polished timber flooring and built-in cabinetry plus adjoining well presented tiled kitchen. The upper level has two bedrooms both with mirrored built-in robes, tastefully appointed modern bathroom and huge east facing balcony with pleasant leafy outlook over the rear yard.

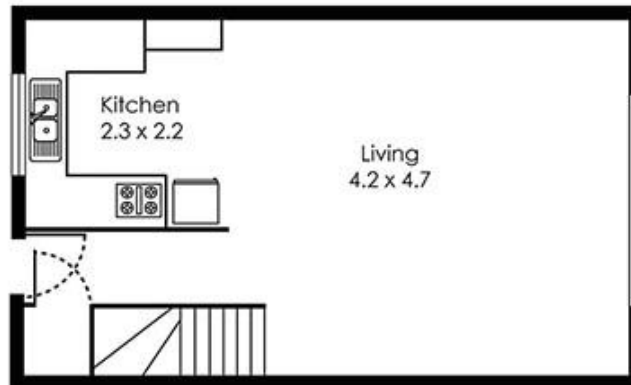
Also comes complete with its own external laundry which offers extra room for storage.

A great first home buy or investment. Be quick!

View : <https://www.cronullarealestate.com.au/sale/nsw/sutherland/woollooware/residential/apartment/5720089>



Ground Floor



First Floor

