



65 Ellesmere Road GYMEA BAY NSW

3 1 1

Refresh, renovate, or re-build! More than ready for a new beginning this original fibro cottage sits on a level 569m2 block in one of Gymea Bay's most desirable locations. Surrounded by quality homes it is located only minutes to Gymea Bay Baths, local shops and Gymea Bay Public School, and is within the Kirrawee High catchment area. The home consists of combined lounge/dining room. A huge covered sunroom runs the length of the rear of the home and opens directly onto the leafy back yard. Original kitchen and bathroom, three bedrooms plus large laundry. Full masonry fencing surrounds the property.

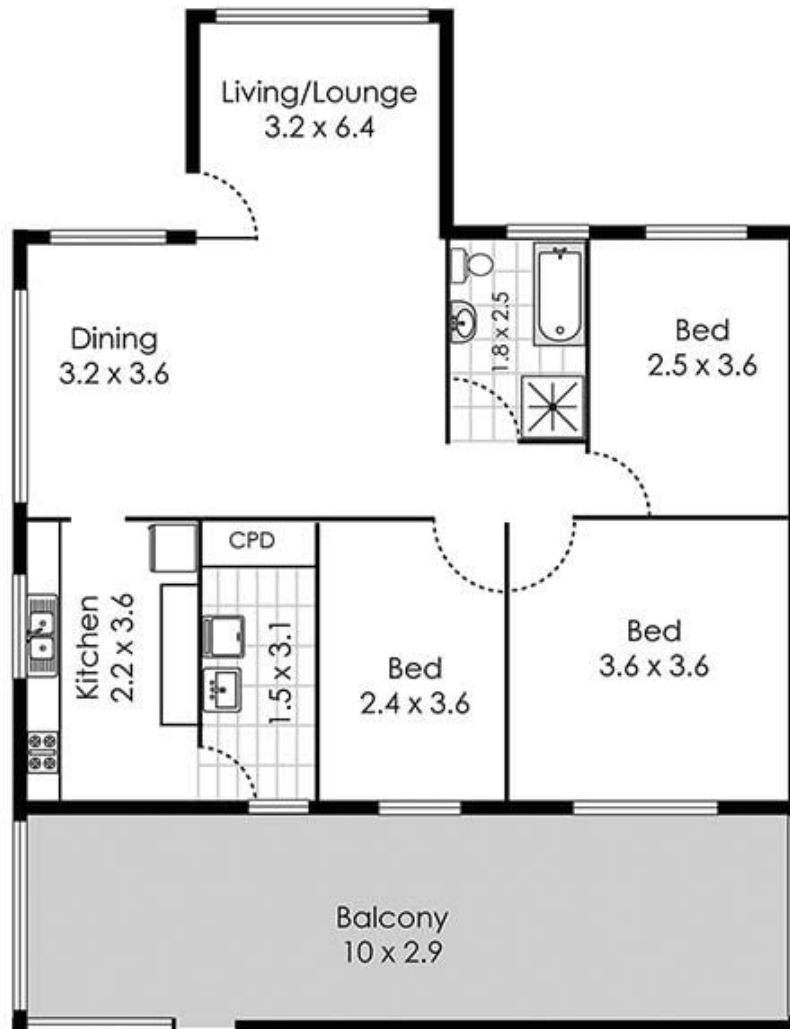
Refresh, renovate or rebuild it's your choice. Too good an opportunity to miss!

Original fibro dwelling set on level 569m2 block
Combined living/dining plus large sunroom

View : <https://www.cronullarealestate.com.au/sale/nsw/sutherland/gymea-bay/residential/house/5720056>

Gymea

65 Ellesmere Road



Cronulla
real estate

Please note: all stated dimensions are approximate only. Particulars given are for general information only and do not constitute any representation on the part of the vendor or agent.